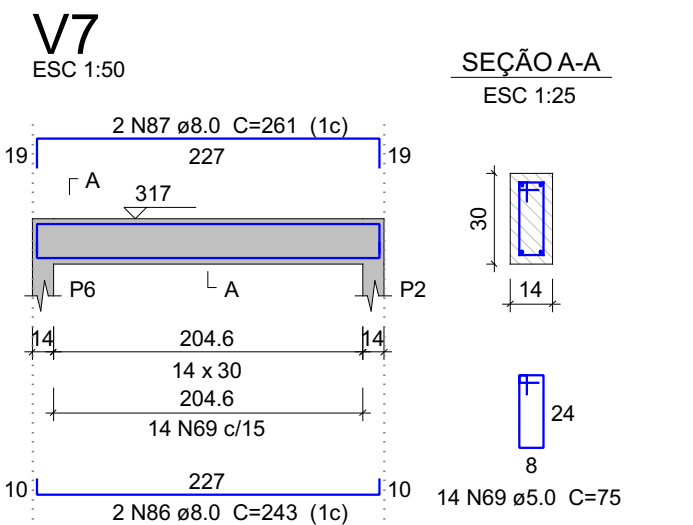
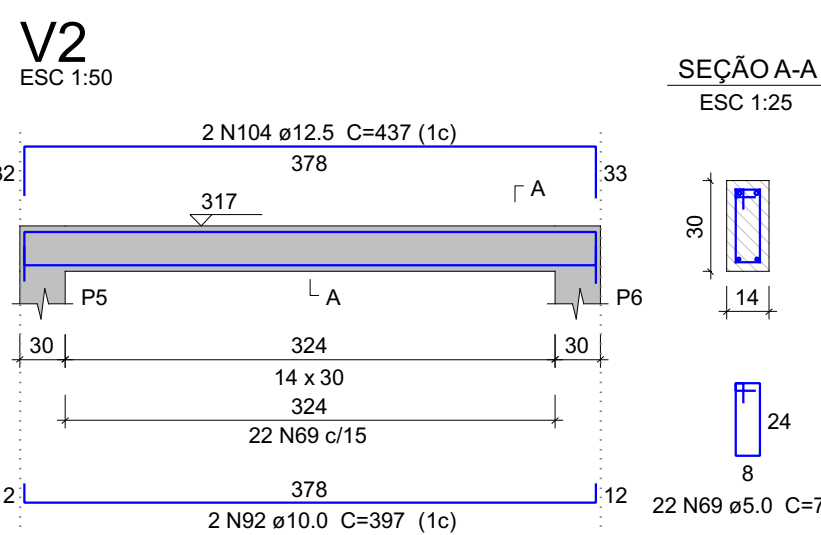
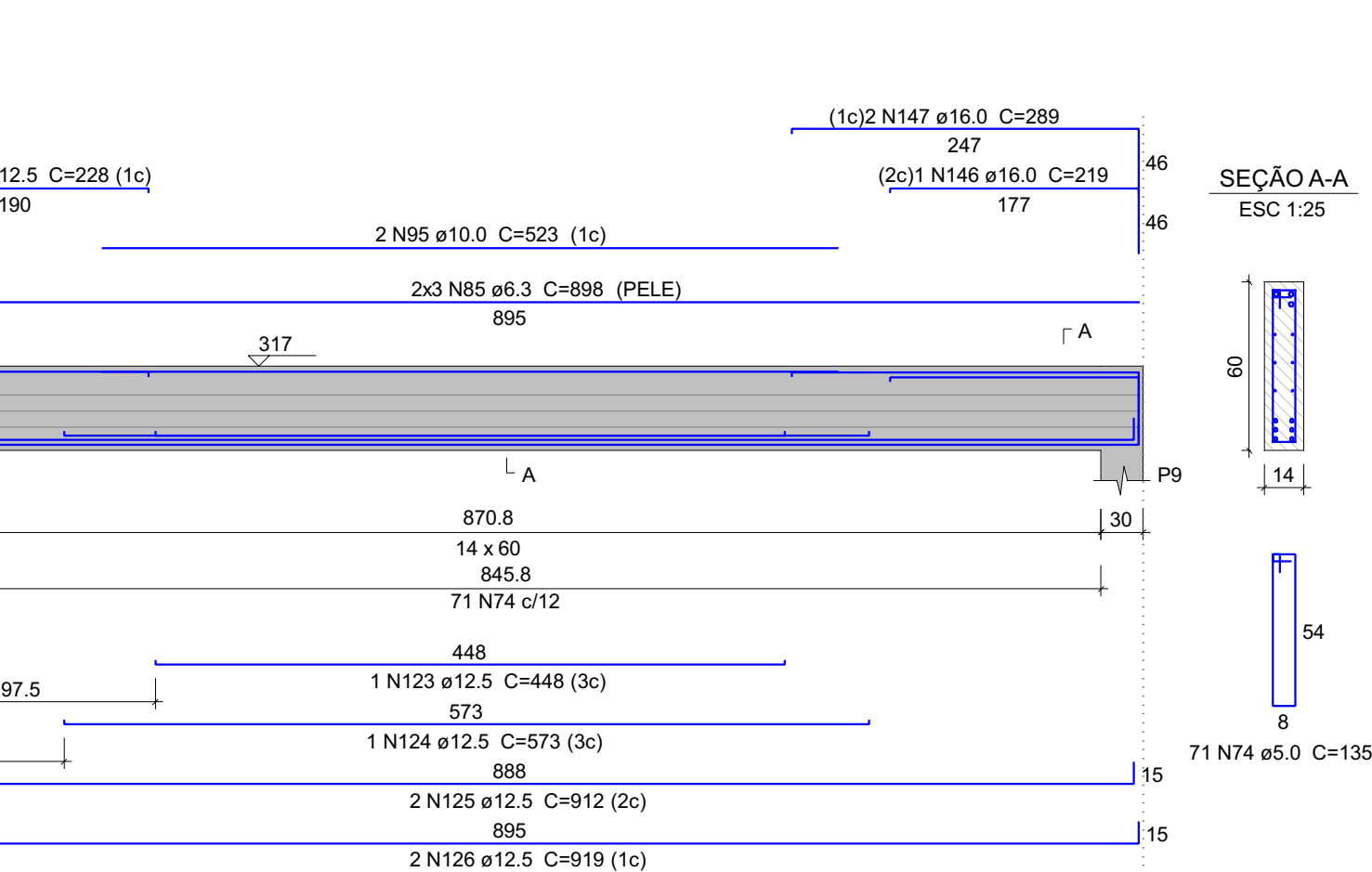
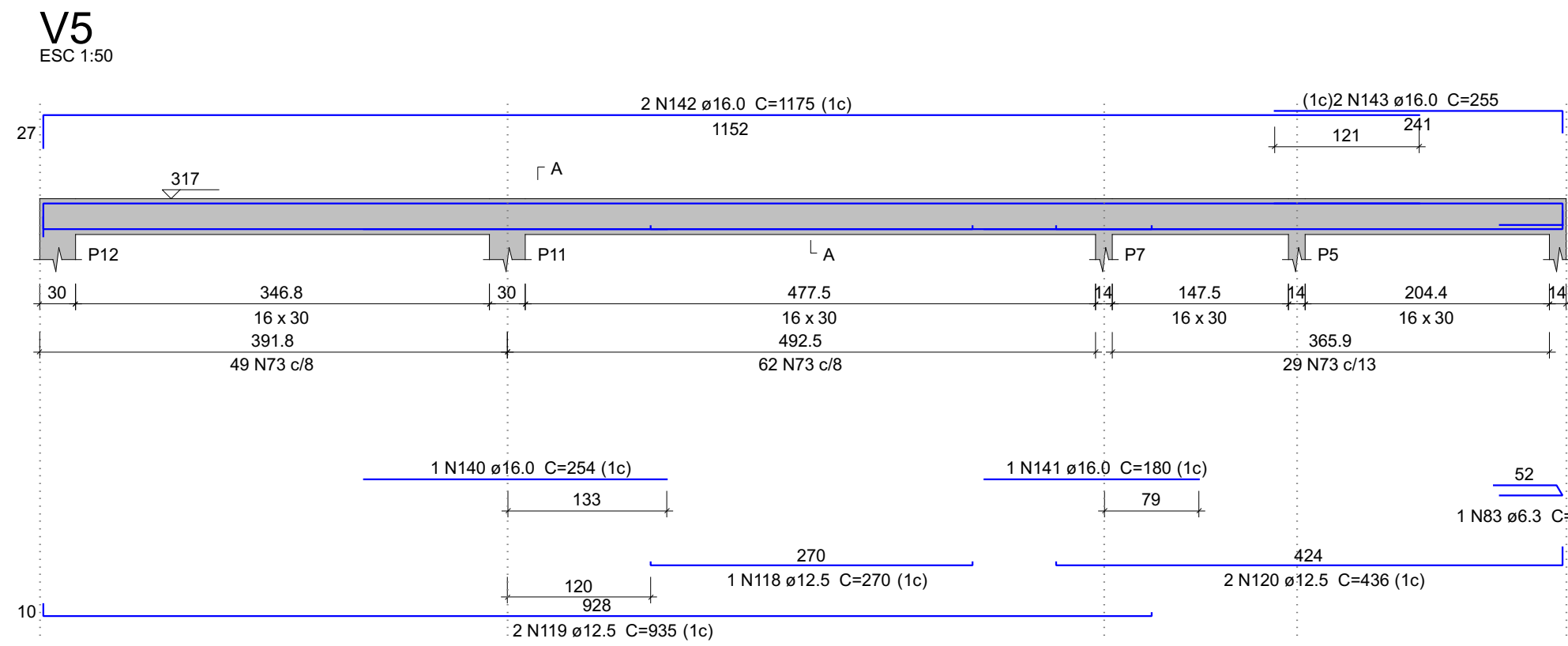
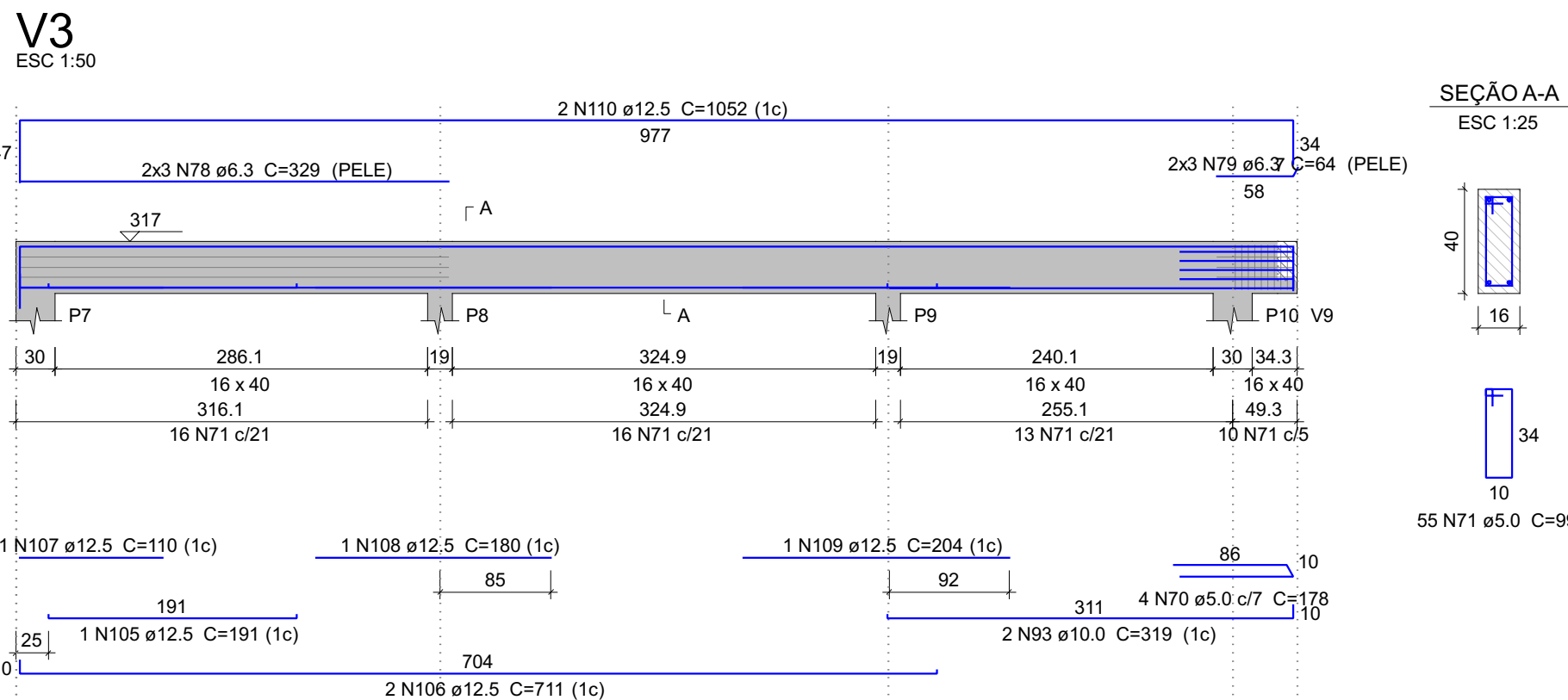
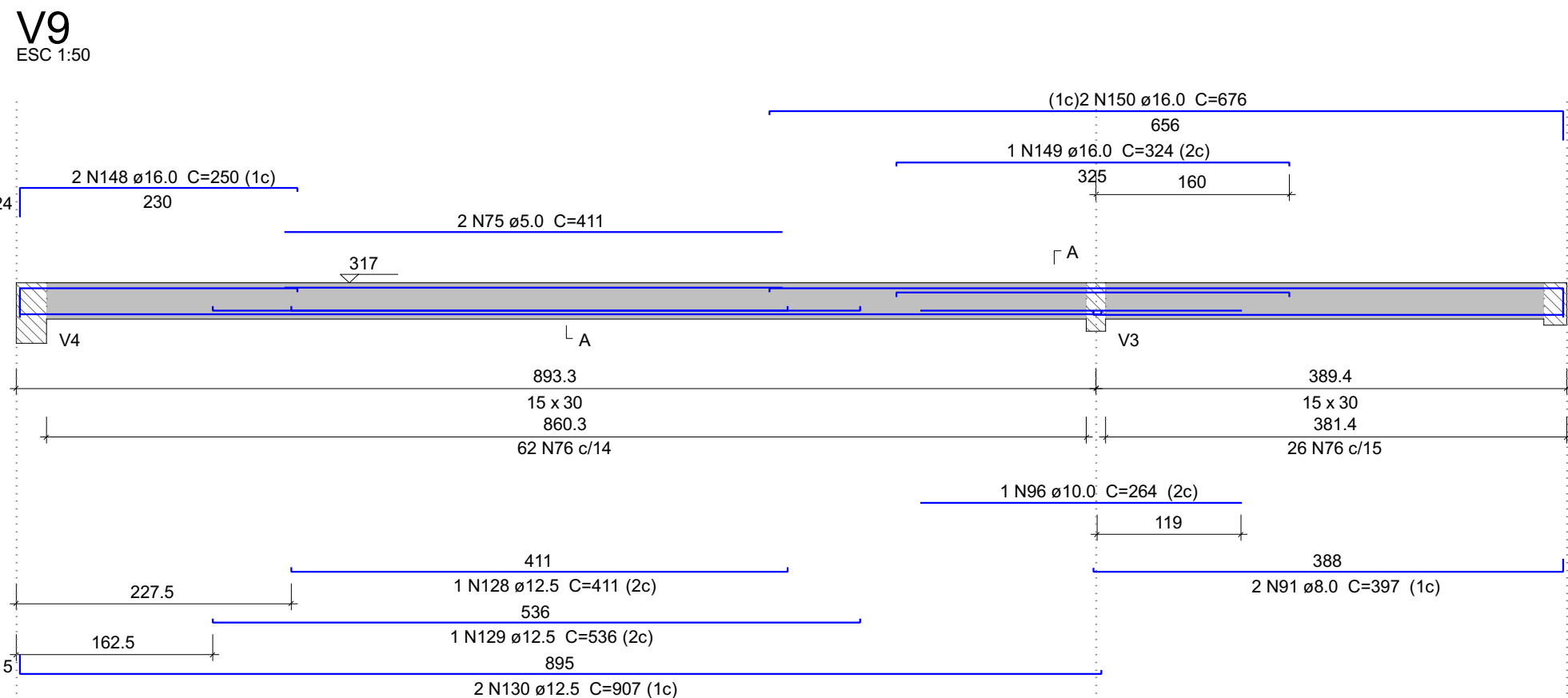
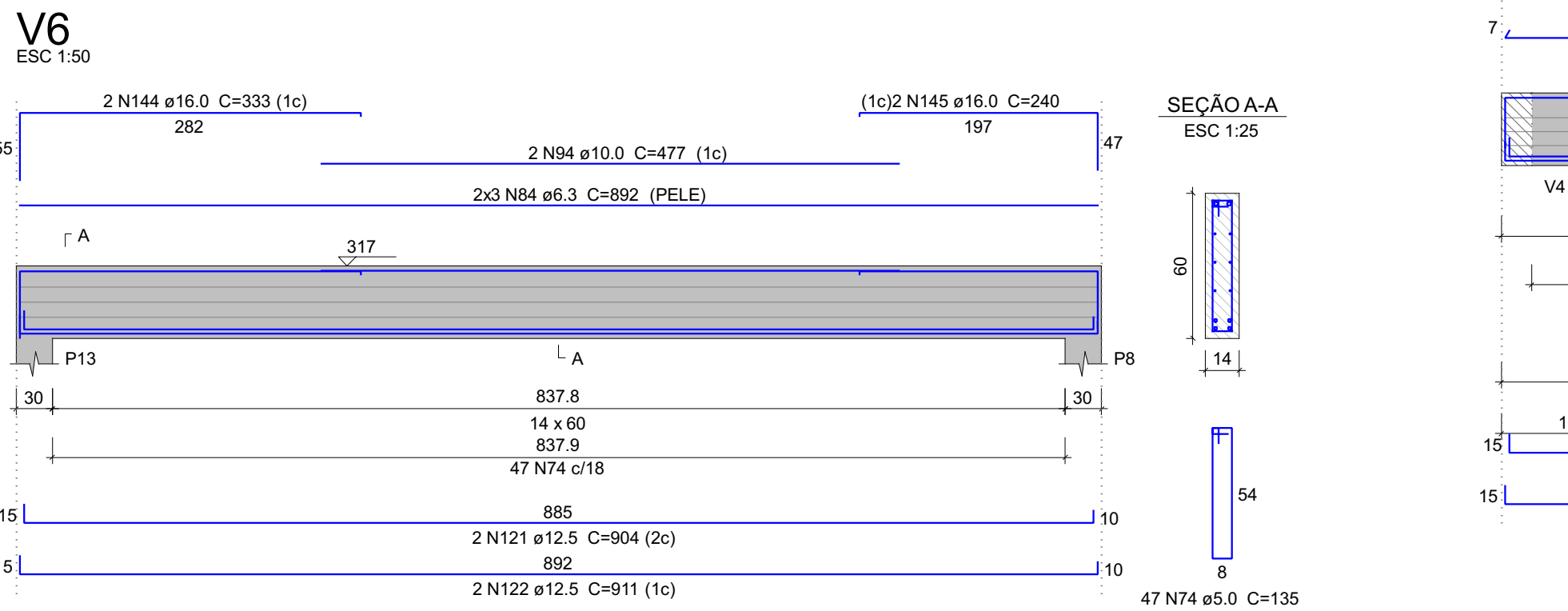
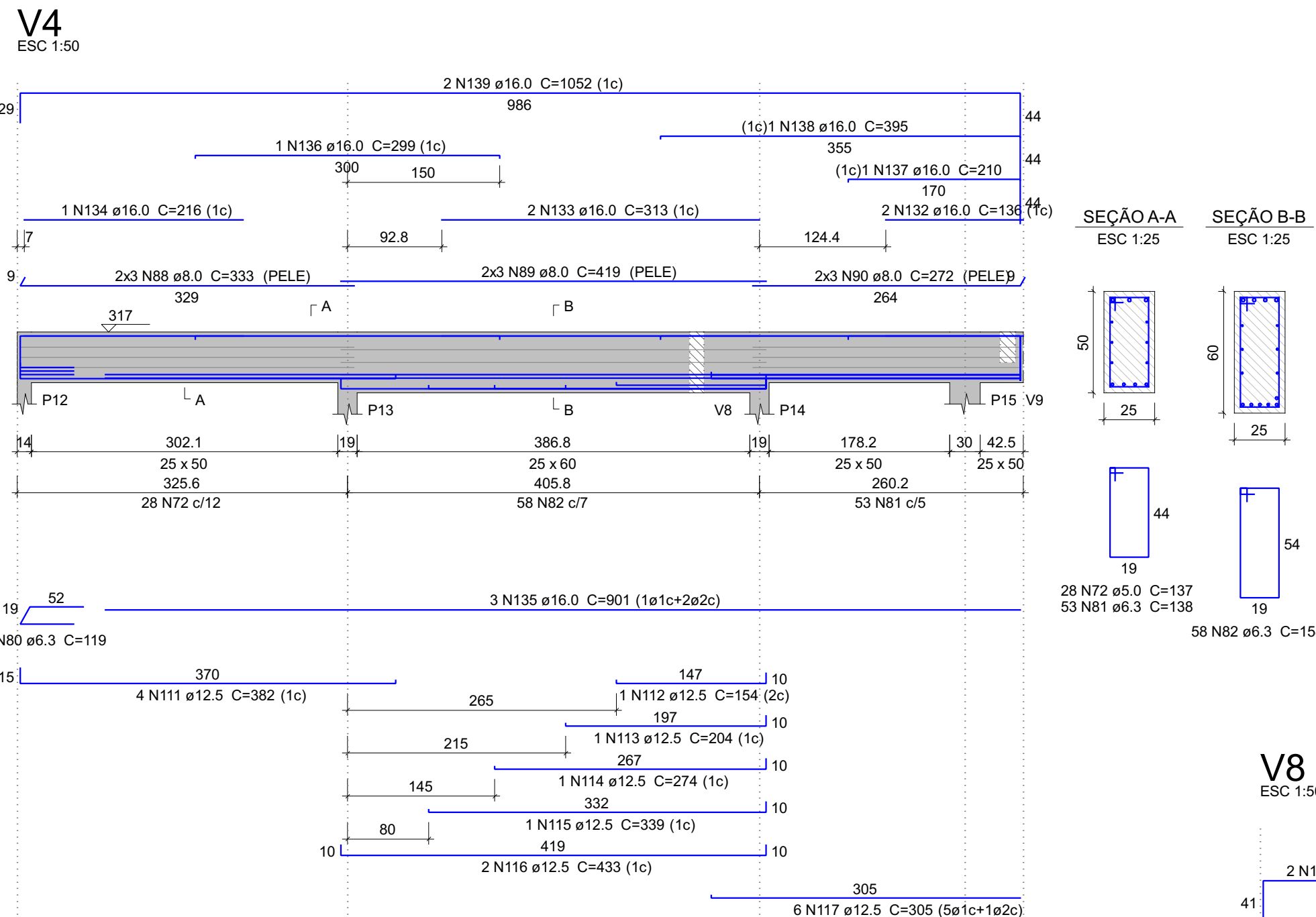
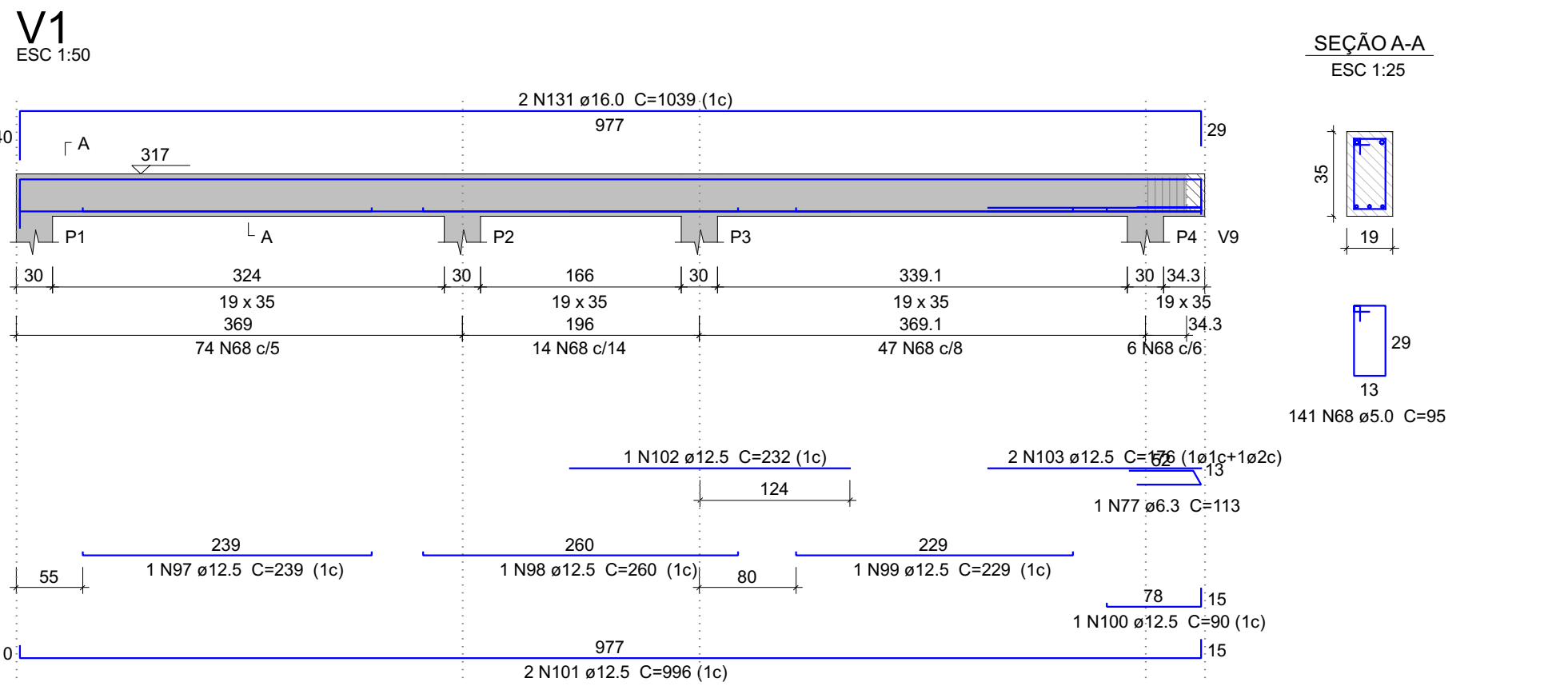



Relação do aço					
AÇO	N	DIAM (mm)	QUANT	C.UNIT (cm)	C.TOTAL (cm)
CA60	68	5.0	141	95	13395
	69	5.0	36	75	2700
	70	5.0	4	179	712
	71	5.0	55	99	5445
	72	5.0	28	137	3836
	73	5.0	140	79	11060
	74	5.0	118	135	15930
	75	5.0	2	411	822
	76	5.0	88	77	6776
	77	6.3	1	113	113
CA50	78	6.3	6	329	1974
	79	6.3	6	64	384
	80	6.3	3	119	357
	81	6.3	53	138	7314
	82	6.3	58	158	9164
	83	6.3	1	110	110
	84	6.3	6	892	5352
	85	6.3	6	898	5388
	86	8.0	2	243	486
	87	8.0	2	261	522
	88	8.0	6	333	1998
	89	8.0	6	419	2514
	90	8.0	6	272	1632
	91	8.0	2	397	794
	92	10.0	2	397	794
	93	10.0	2	319	638
	94	10.0	2	477	954
	95	10.0	2	523	1046
	96	10.0	1	264	264
	97	12.5	1	239	239
	98	12.5	1	260	260
	99	12.5	1	229	229
	100	12.5	1	90	90
	101	12.5	2	996	1992
	102	12.5	1	232	232
	103	12.5	2	176	352
	104	12.5	2	437	874
	105	12.5	1	191	191
	106	12.5	2	711	1422
	107	12.5	1	110	110
	108	12.5	1	180	180
	109	12.5	1	204	204
	110	12.5	2	1052	2104
	111	12.5	4	382	1528
	112	12.5	1	154	154
	113	12.5	1	204	204
	114	12.5	1	274	274
	115	12.5	1	339	339
	116	12.5	2	433	866
	117	12.5	6	305	1830
	118	12.5	1	270	270
	119	12.5	2	935	1870
	120	12.5	2	436	872
	121	12.5	2	904	1808
	122	12.5	2	911	1822
	123	12.5	1	448	448
	124	12.5	1	573	573
	125	12.5	2	912	1824
	126	12.5	2	919	1838
	127	12.5	2	228	456
	128	12.5	1	411	411
	129	12.5	1	536	536
	130	12.5	2	907	1814
	131	16.0	2	1039	2078
	132	16.0	2	136	272
	133	16.0	2	313	626
	134	16.0	1	216	216
	135	16.0	3	901	2703
	136	16.0	1	299	299
	137	16.0	1	210	210
	138	16.0	1	395	395
	139	16.0	2	1052	2104
	140	16.0	1	254	254
	141	16.0	1	180	180
	142	16.0	2	1175	2350
	143	16.0	2	255	510
	144	16.0	2	333	666
	145	16.0	2	240	480
	146	16.0	1	219	219
	147	16.0	2	289	578
	148	16.0	2	250	500
	149	16.0	1	324	324
	150	16.0	2	676	1352

Resumo do aço				
AÇO	DIAM (mm)	C.TOTAL (m)	QUANT + 10 % (Barras)	PESO + 10 % (kg)
CA50	6.3	301.6	28	81.2
	8.0	79.5	8	34.5
	10.0	37	4	25.1
	12.5	282.2	26	299
	16.0	163.2	15	283.3
CA60	5.0	606.8	-	102.9
PESO TOTAL (kg)				
CA50	723			
CA60	102.9			
Volume de concreto (C-25) = 5.31 m³				
Área de forma = 56.27 m²				





**PREFEITURA MUNICIPAL DE ARAPIRACA**  
Secretaria Municipal de Infraestrutura

Estrutura em Concreto Armado

Título/ Obra: Ampliação CREAS

Localização: Av. Minervina Francisca da Conceição, Santa Esmeralda, Arapiraca - AL

Proprietário/ Responsável:  
  
Prefeitura Municipal de Arapiraca - CNPJ: 12198693/ 0001-58  
  
Valmir Rodrigues de Albuquerque Filho  
CREA/AL - 0215091841

Dados do Projeto: 

ÁREA DO TERRENO: 1.364,96m²  
ÁREA CONSTRUÍDA DA AMPLIAÇÃO: 127,89m²  
ÁREA DA COBERTA: 148,33m²

Assunto: Vigas do pavimento Superior

Atenção: Conferir as Medidas no Local

Desenho: SEMINFRA  
Data: 09/12/2024  
Escala: Indicada

Prancha Nº:  
**8 /10**