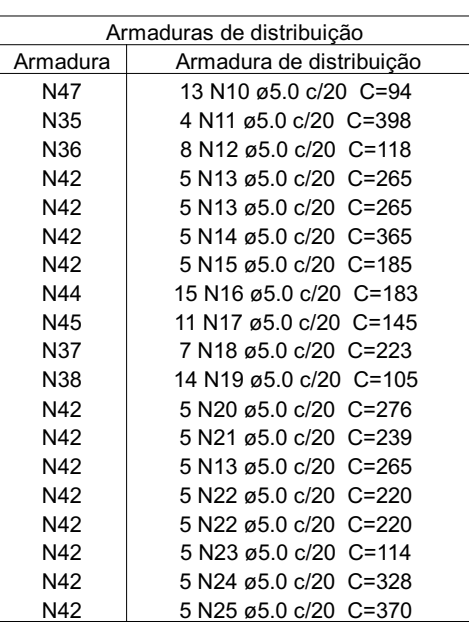


Relação do aço					
Negativos X		Negativos Y			
AÇO	N	DIAM (mm)	QUANT	C.UNIT (cm)	C.TOTAL (cm)
CA60	1	5.0	8	80	640
	2	5.0	60	411	24660
	3	5.0	20	217	4340
	4	5.0	25	194	4850
	5	5.0	9	162	1458
	6	5.0	9	249	2241
	7	5.0	5	300	1500
	8	5.0	5	280	1400
	9	5.0	5	148	740
	10	5.0	132	94	1222
	11	5.0	4	398	1592
	12	5.0	8	118	944
	13	5.0	30	265	7950
	14	5.0	5	365	1825
	15	5.0	5	185	925
	16	5.0	10	183	1830
	17	5.0	11	145	1595
	18	5.0	7	223	1561
	19	5.0	14	105	1470
	CA50	20	5.0	5	276
21		5.0	5	239	1195
22		5.0	15	220	3300
23		5.0	5	114	570
24		5.0	5	328	1640
25		5.0	5	370	1850
26		6.3	4	99	396
27		6.3	21	282	2562
28		6.3	21	189	3969
29		6.3	21	233	4893
30		6.3	20	174	3480
31		6.3	21	119	2499
32		6.3	21	176	3696
33		6.3	21	173	3639
34		6.3	21	209	4389
35		6.3	20	78	1560
36		6.3	6	148	888
37		6.3	11	133	1463
38		6.3	5	277	1385
39		8.0	11	152	608
40	8.0	11	177	1347	
41	8.0	10	270	2700	
42	8.0	288	122	35136	
43	8.0	21	205	4305	
44	8.0	9	254	2556	
45	8.0	7	209	1463	
46	10.0	10	128	1280	
47	10.0	5	264	1320	

escala 1:50



Resumo do aço				
AÇO	DIAM (mm)	C.TOTAL (m)	QUANT + 10 % (Barras)	PESO + 10 % (kg)
CA50	6.3	329.3	31	88.6
	8.0	487.2	45	214.4
	10.0	26	3	17.5
CA60	5.0	736	-	124.8
PESO TOTAL (kg)				
CA50	317.7			
CA60	124.8			

escala 1:50

