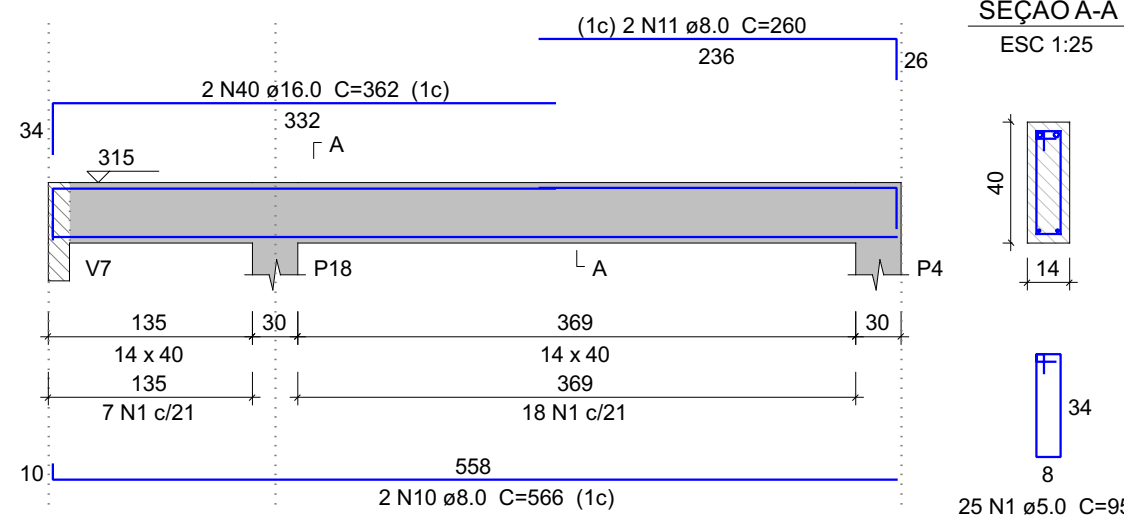


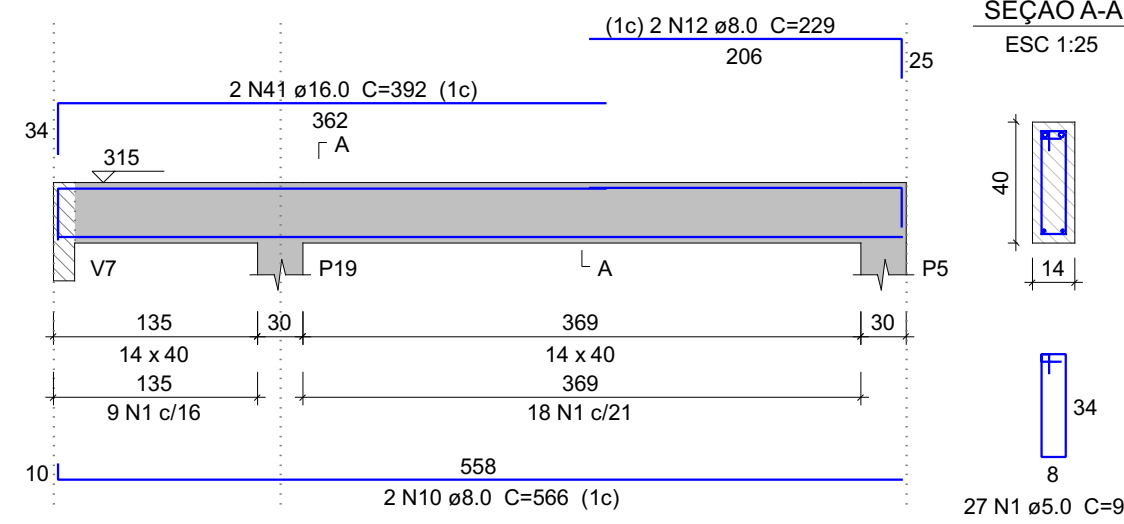
## V14

ESC 1:50



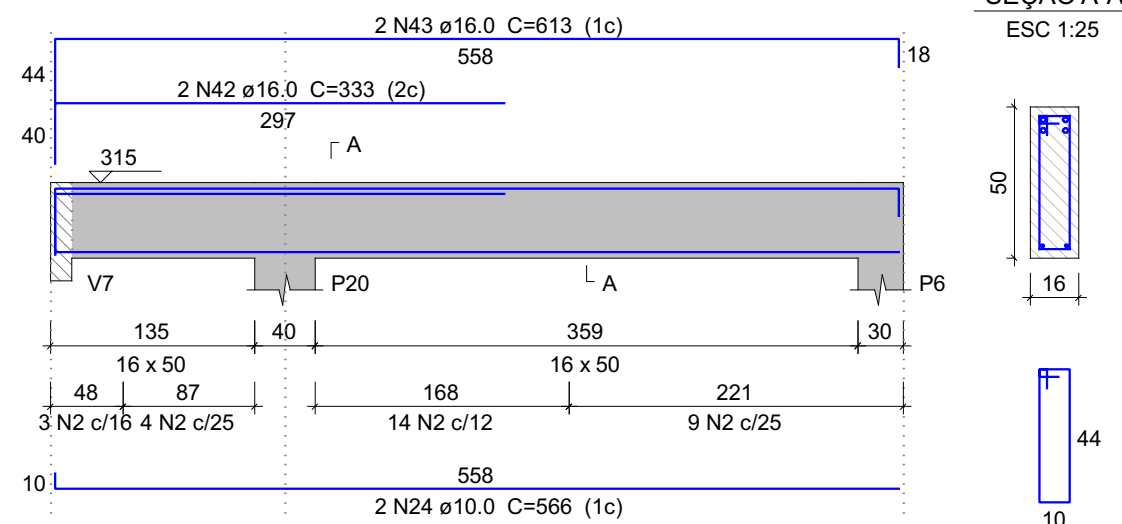
## V15

ESC 1:50



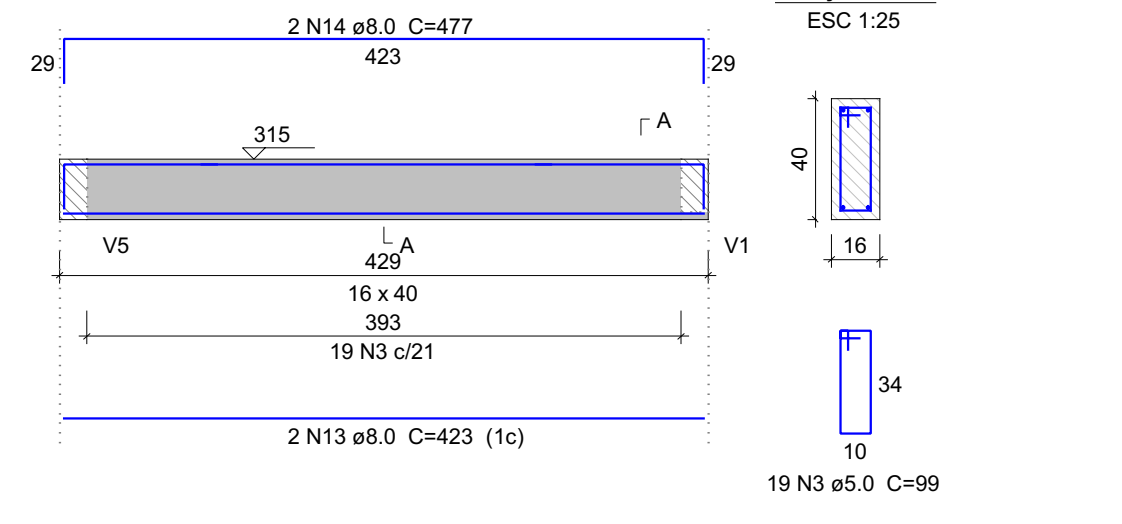
## V16

ESC 1:50



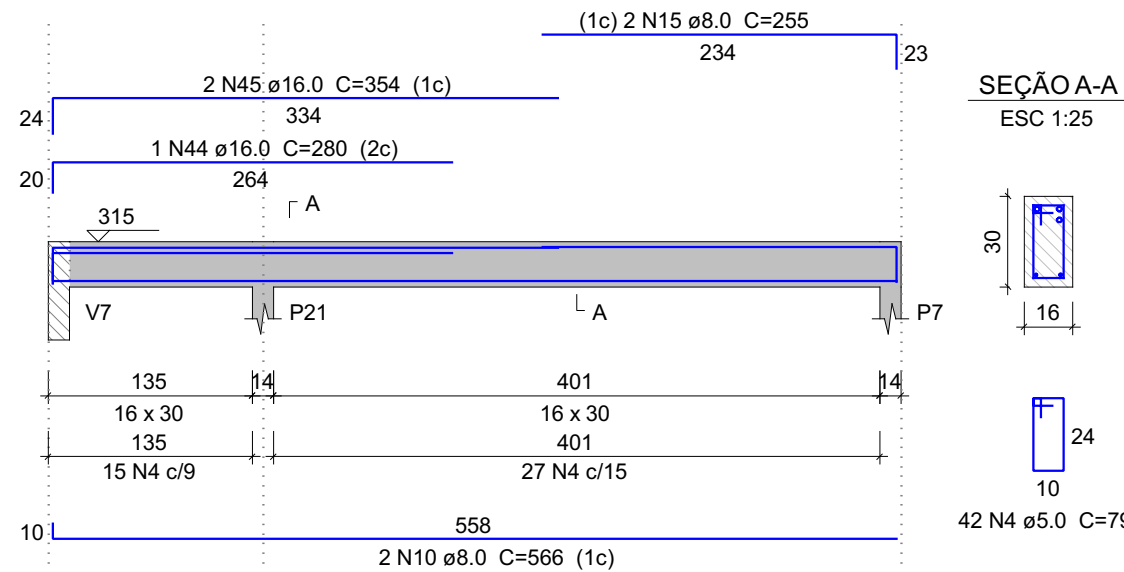
## V17

ESC 1:50



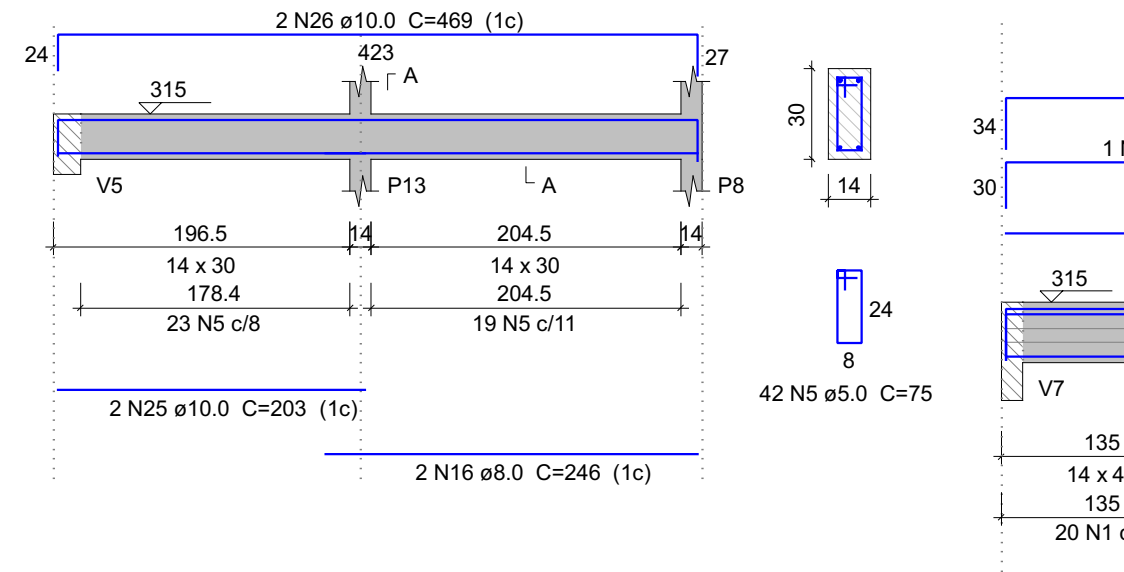
## V18

ESC 1:50



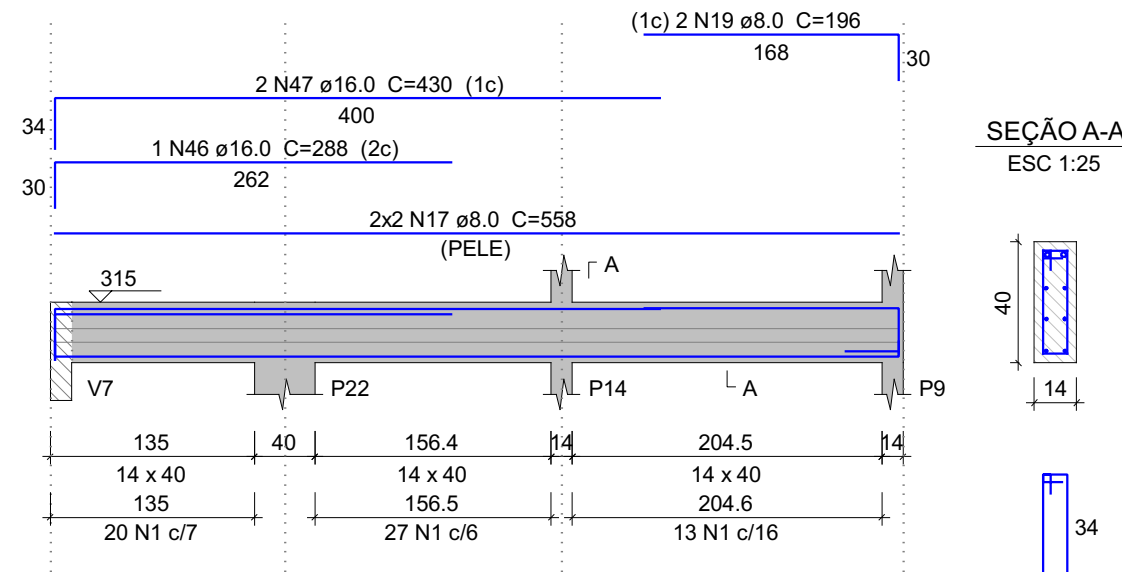
## V19

ESC 1:50



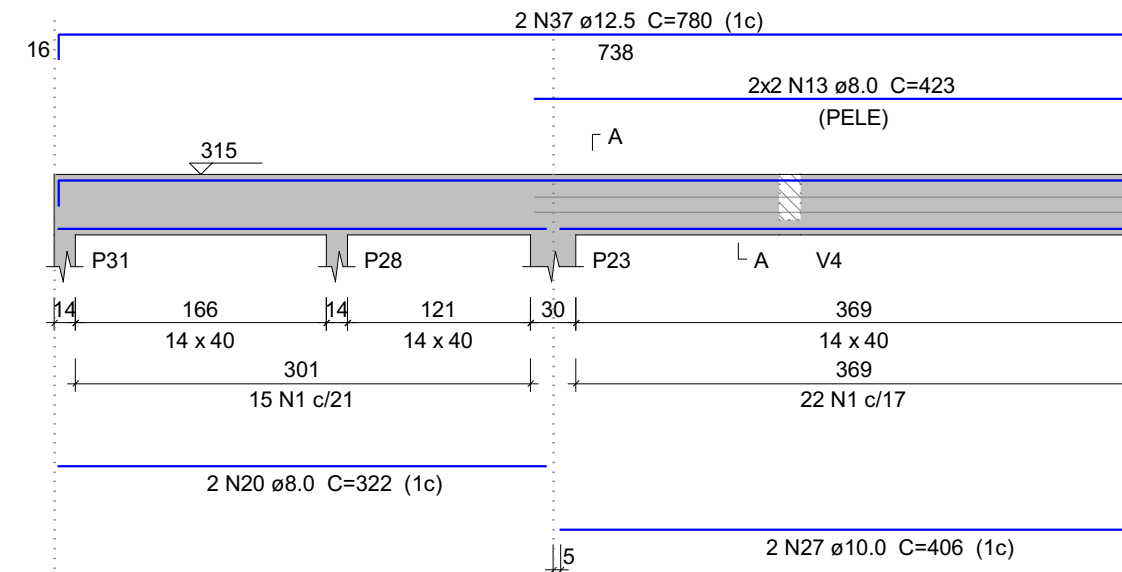
## V20

ESC 1:50



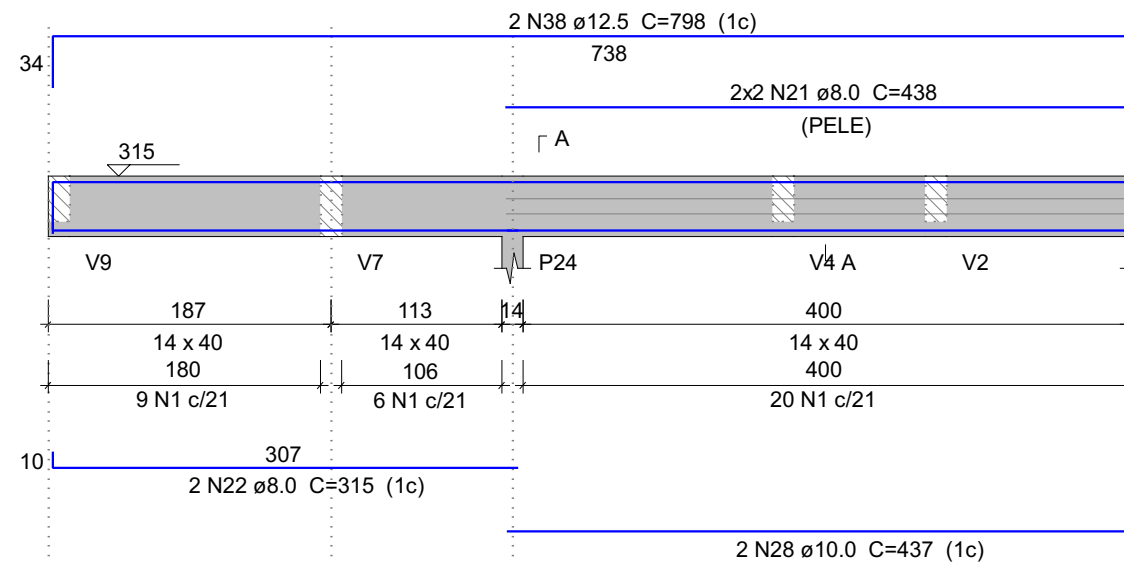
## V21

ESC 1:50



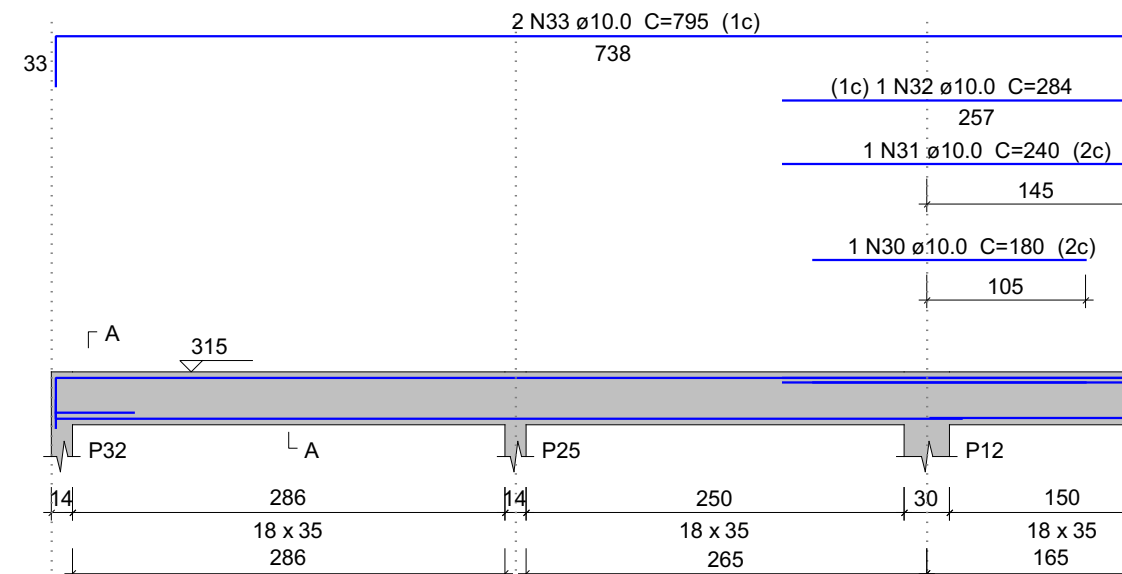
## V22

ESC 1:50



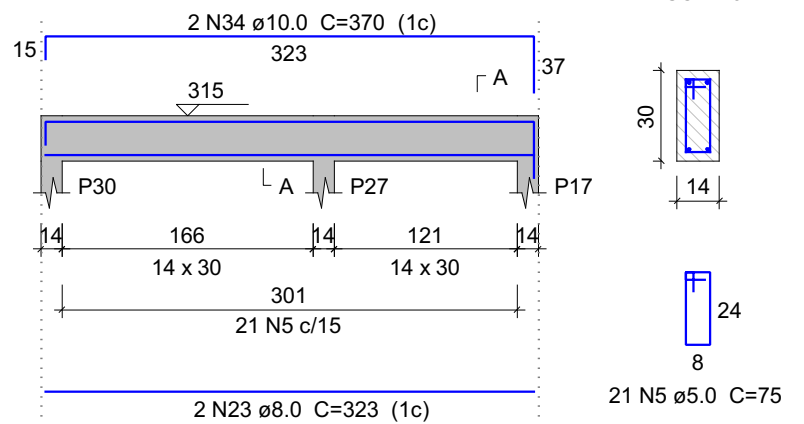
## V23

ESC 1:50



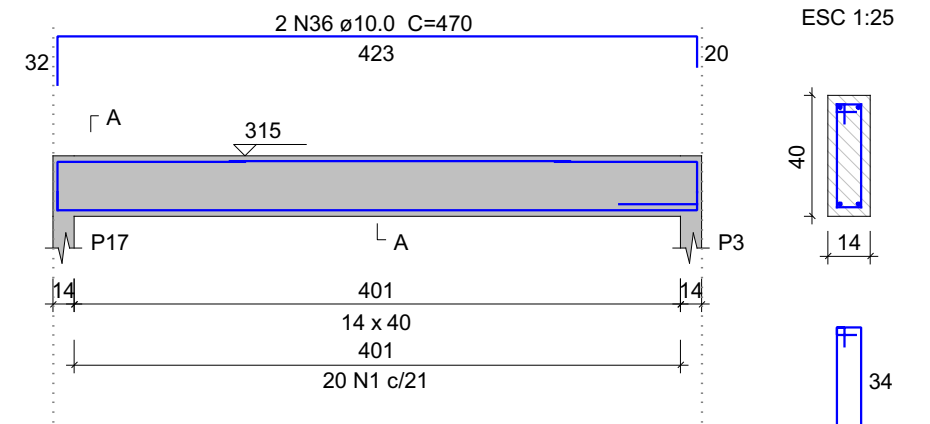
## V12

ESC 1:50



## V13

ESC 1:50



## Relação do aço

ÁÇO	N	DIAM (mm)	QUANT	C.UNIT (cm)	C.TOTAL (cm)
CA60	1	5.0	204	95	19380
	2	5.0	30	119	3570
	3	5.0	19	99	1881
	4	5.0	42	79	3318
	5	5.0	63	75	4725
	6	5.0	77	93	7161
	7	6.3	1	74	74
	8	6.3	1	112	112
	9	6.3	1	108	108
	10	8.0	6	566	5396
	11	8.0	2	250	520
	12	8.0	2	229	458
	13	8.0	6	423	2538
	14	8.0	2	477	954
	15	8.0	2	255	510
	16	8.0	2	246	492
	17	8.0	4	558	2232
	18	8.0	2	574	1148
	19	8.0	2	196	392
	20	8.0	2	322	644
	21	8.0	4	438	1752
	22	8.0	2	315	630
	23	8.0	2	323	646
	24	10.0	2	566	1132
	25	10.0	2	203	406
	26	10.0	2	469	938
	27	10.0	2	406	812
	28	10.0	2	437	874
	29	10.0	2	609	1218
	30	10.0	1	180	180
	31	10.0	1	240	240
	32	10.0	1	284	284
	33	10.0	2	795	1590
	34	10.0	2	370	740
	35	10.0	2	442	884
	36	10.0	2	470	940
	37	12.5	2	780	1560
	38	12.5	2	798	1596
	39	12.5	2	167	334
	40	16.0	2	362	724
	41	16.0	2	392	784
	42	16.0	2	333	666
	43	16.0	2	613	1226
	44	16.0	1	280	280
	45	16.0	2	354	708
	46	16.0	1	288	288
	47	16.0	2	430	860

## Resumo do aço

ÁÇO	DIAM (mm)	C.TOTAL (m)	QUANT + 10 % (Barras)	PESO + 10 % (kg)
CA50	6.3	3	1	0.8
	8.0	183.2	15	70.8
	10.0	102.4	10	69.4
	12.5	34.9	4	37
	16.0	55.4	6	96.1
CA60	5.0	400.4	-	67.9
PESO TOTAL (kg)				
CA50		274.1		
CA60		67.9		

Volume de concreto (C-25) = 3.49 m³  
Área de forma = 41.73 m²



## PREFEITURA MUNICIPAL DE ARAPIRACA

Secretaria Municipal de Infraestrutura

## Projeto Estrutural em Concreto Armado

Título/ Obra: Centro de Referência a Assistência Social - CRAS

Localização: Corredor Verde Dom Constantino Leurs, Arapiraca - Al

Proprietário/ Responsável:

Prefeitura Municipal de Arapiraca - CNPJ: 12198693/ 0001-58

Valmir Rodrigues de Albuquerque Filho  
CREA/AL - 0215091841Dados do Projeto: ÁREA DO TERRENO: 1.168,00m²  
ÁREA CONSTRUIDA: 211,00m²  
ÁREA DE COBERTA: 230,00m²

Assunto: Vigas do Pavimento Superior

Atenção: Conferir as Medidas no Local

Prancha Nº:

Desenho: SEMINFRA

Data: 23/04/2024

Escala: Indicada

11/15