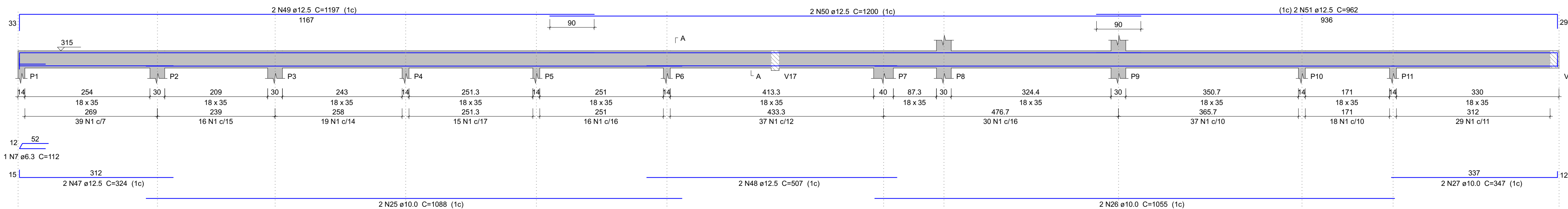


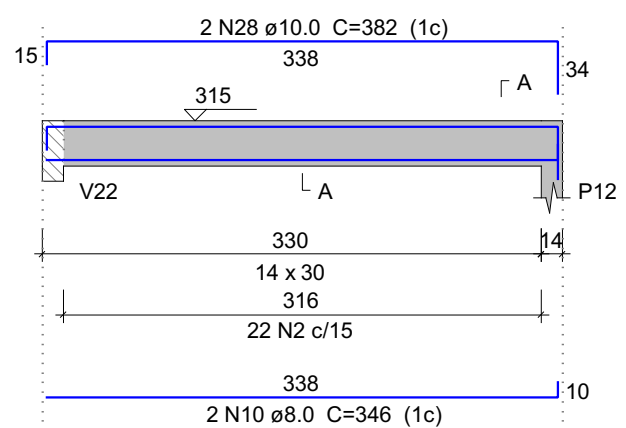
V1

ESC 1:50



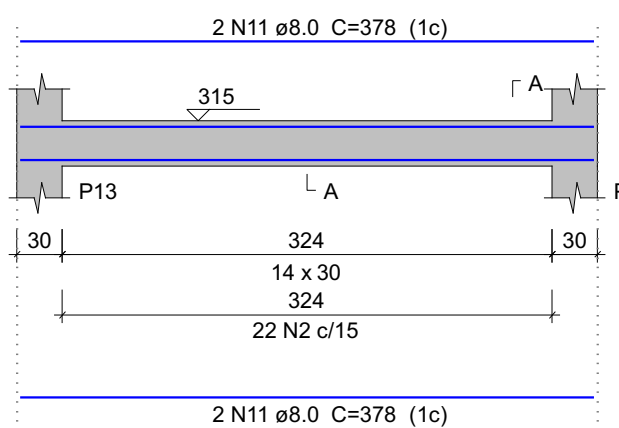
V2

ESC 1:50



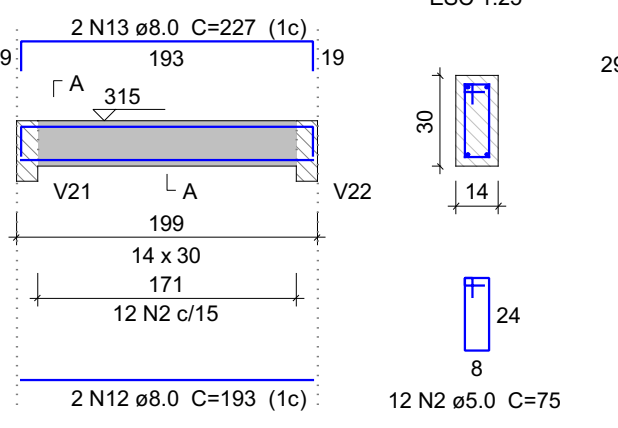
V3

ESC 1:50



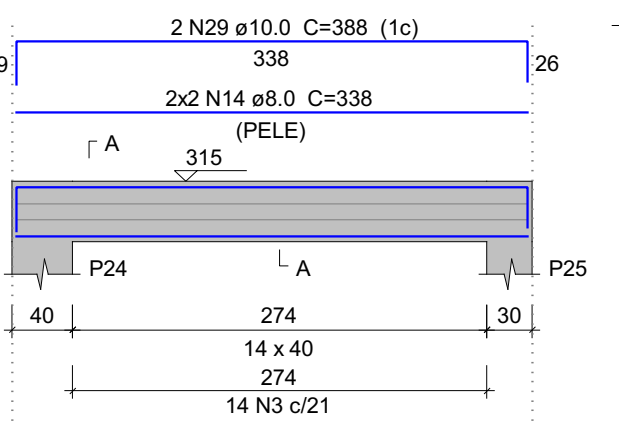
V4

ESC 1:50



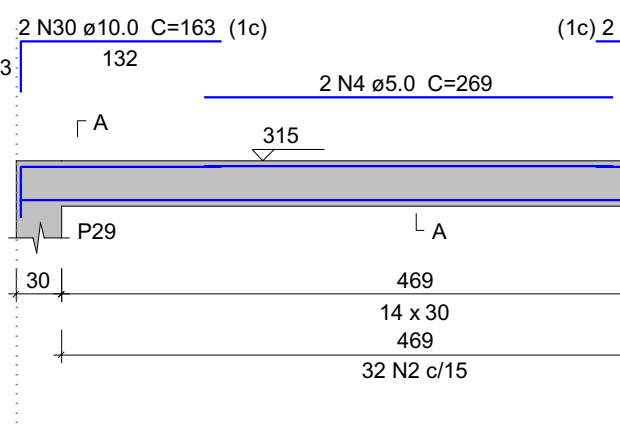
V6

ESC 1:50



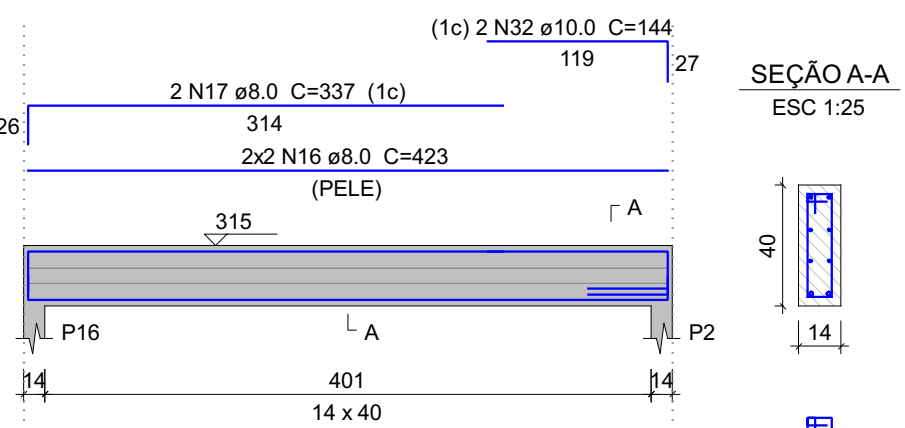
V8

ESC 1:50



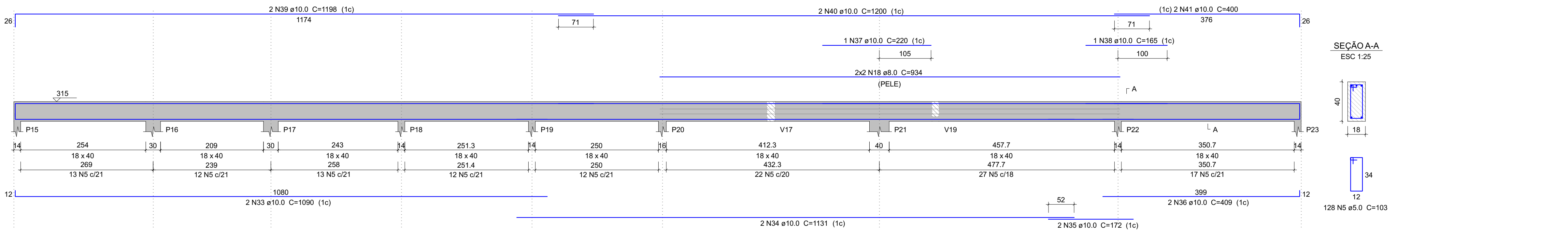
V11

ESC 1:50



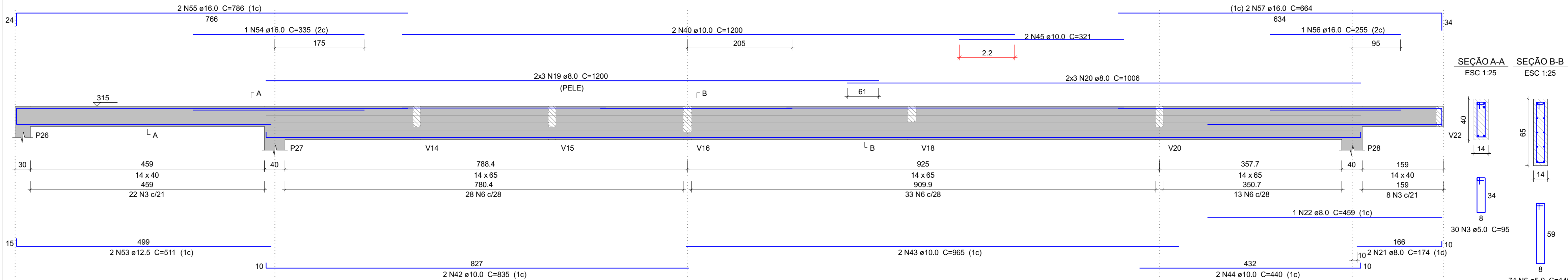
V5

ESC 1:50



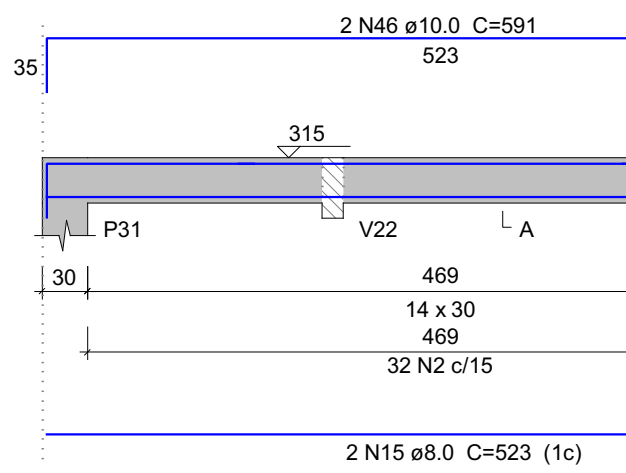
V7

ESC 1:50



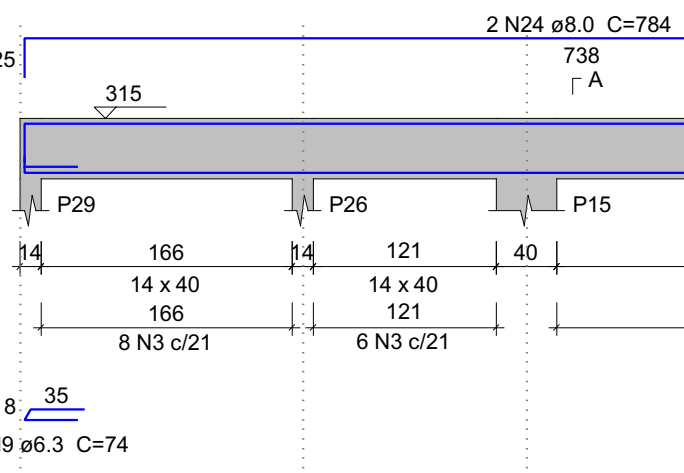
V9

ESC 1:50



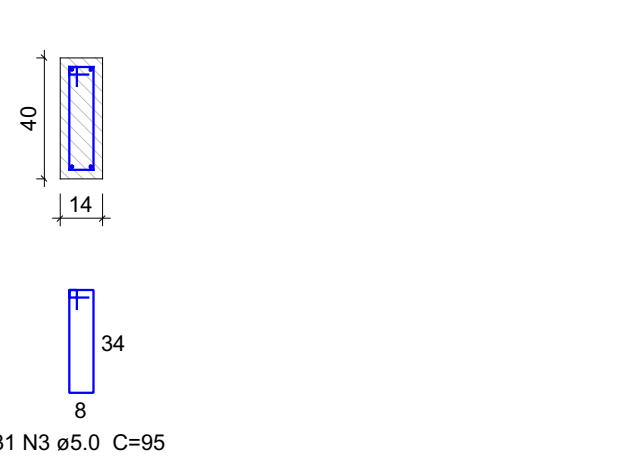
V10

ESC 1:50



SEÇÃO A-A

ESC 1:25



Relação do aço

ACO	N	DIAM (mm)	QUANT	C.UNIT (cm)	C.TOTAL (cm)
CA60	1	5.0	256	93	23808
	2	5.0	120	75	9000
	3	5.0	95	95	9025
	4	5.0	2	269	538
	5	5.0	128	103	13184
CA50	6	5.0	74	145	10730
	7	6.3	1	112	112
	8	6.3	2	108	216
	9	6.3	1	74	74
	10	8.0	2	346	692
	11	8.0	4	378	1512
	12	8.0	2	193	386
	13	8.0	2	227	454
	14	8.0	6	338	2028
	15	8.0	4	523	2092
	16	8.0	4	423	1692
	17	8.0	2	337	674
	18	8.0	4	934	3736
	19	8.0	6	1200	7200
	20	8.0	6	1006	6036
	21	8.0	2	174	348
	22	8.0	1	459	459
	23	8.0	2	746	1492
	24	8.0	2	784	1568
	25	10.0	2	1088	2176
	26	10.0	2	1055	2110
	27	10.0	2	347	694
	28	10.0	2	382	764
	29	10.0	2	388	776
	30	10.0	2	163	326
	31	10.0	2	172	344
	32	10.0	2	144	288
	33	10.0	2	1090	2180
	34	10.0	2	1131	2262
	35	10.0	2	172	344
	36	10.0	2	409	818
	37	10.0	1	220	220
	38	10.0	1	165	165
	39	10.0	2	1198	2396
	40	10.0	4	1200	4800
	41	10.0	2	400	800
	42	10.0	2	835	1670
	43	10.0	2	965	1930
	44	10.0	2	440	880
	45	10.0	2	321	642
	46	10.0	2	591	1182
	47	12.5	2	324	648
	48	12.5	2	507	1014
	49	12.5	2	1197	2394
	50	12.5	2	1200	2400
	51	12.5	2	962	1924
	52	12.5	2	447	894
	53	12.5	2	511	1022
	54	16.0	1	335	335
	55	16.0	2	786	1572
	56	16.0	1	255	255
	57	16.0	2	664	1328

Resumo do aço

ACO	DIAM (mm)	C.TOTAL (m)	QUANT + 10 % (Barras)	PESO + 10 % (kg)
CA50	6.3	4.1	1	1.1
	8.0	303.7	28	131.8
	10.0	277.7	26	188.3
	12.5	103	10	109.1
	16.0	34.9	4	60.6
CA60		5.0	662.9	112.4
PESO TOTAL (kg)				
CA50		490.9		
CA60		112.4		

Volume de concreto (C-25) = 7.43 m³  
Área de forma = 89.47 m²

PREFEITURA MUNICIPAL DE ARAPIRACA

Secretaria Municipal de Infraestrutura

## Projeto Estrutural em Concreto Armado

Título/ Obra: Centro de Referência a Assistência Social - CRAS

Localização: Corredor Verde Dom Constantino Leurs, Arapiraca - AL

Proprietário/ Responsável:

Prefeitura Municipal de Arapiraca - CNPJ: 12198693/ 0001-58

Valmir Rodrigues de Albuquerque Filho  
CREA/AL - 0215091841Dados do Projeto: ÁREA DO TERRENO: 1.168,00m²  
ÁREA CONSTRUÍDA: 211,00m²  
ÁREA DE COBERTA: 230,00m²

Assunto: Vigas do Pavimento Superior

Atenção: Conferir as Medidas no Local

Plancha Nº:

Desenho: SEMINFRA

Data: 23/04/2024

Escala: Indicada

10/ 15