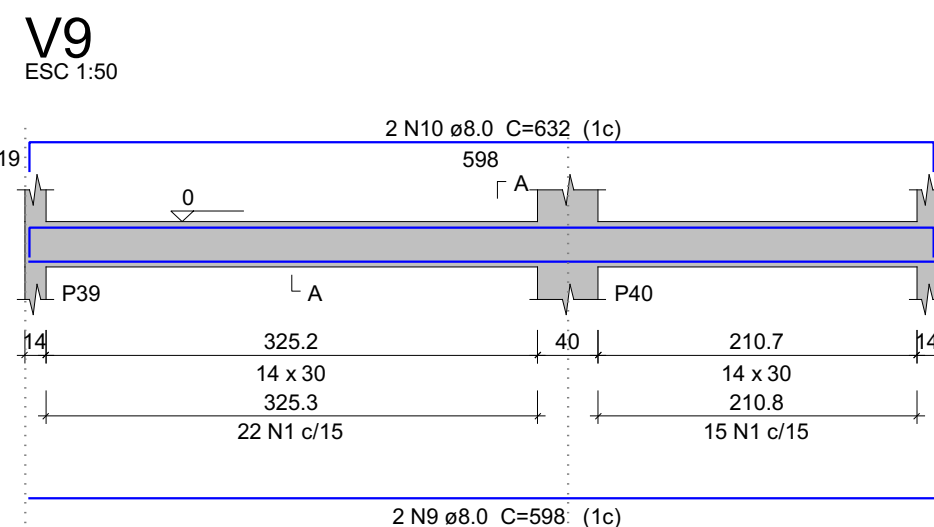
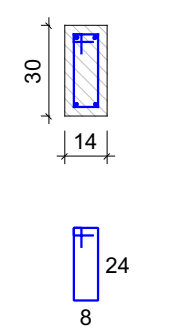
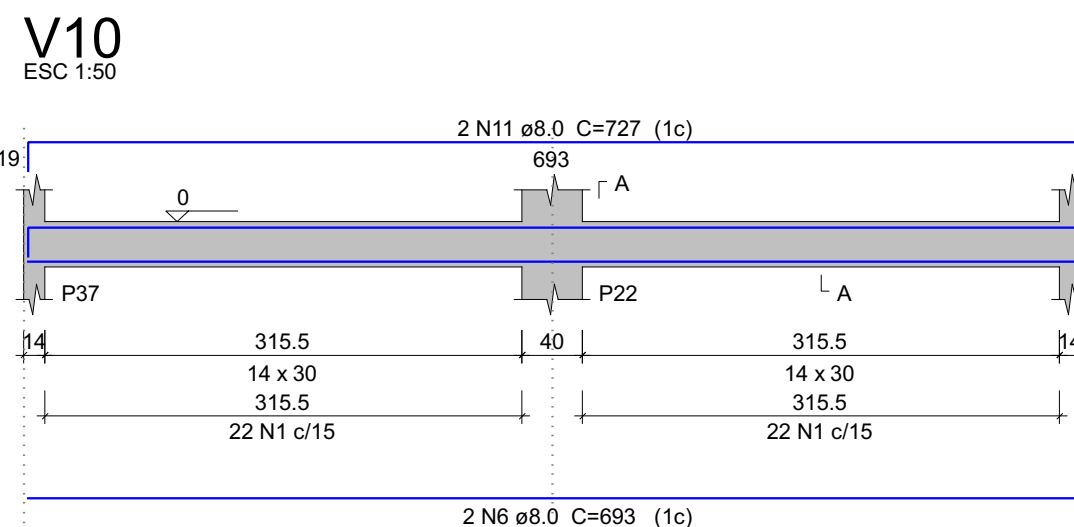
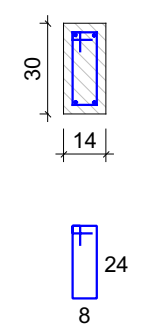


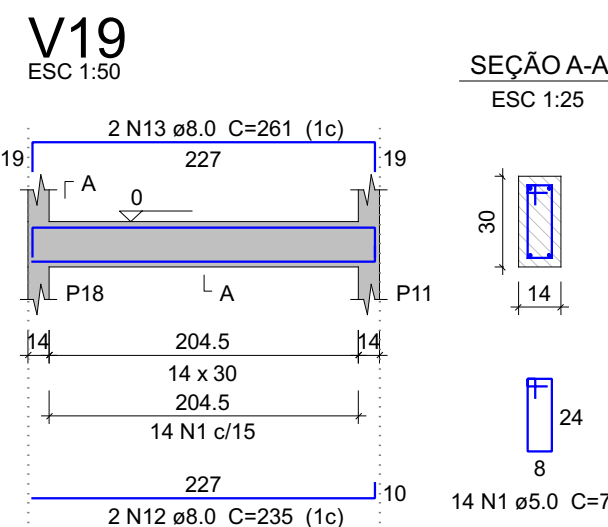
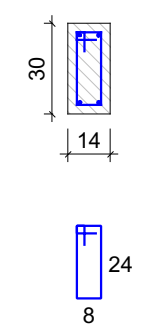
SEÇÃO A-A
ESC 1:25



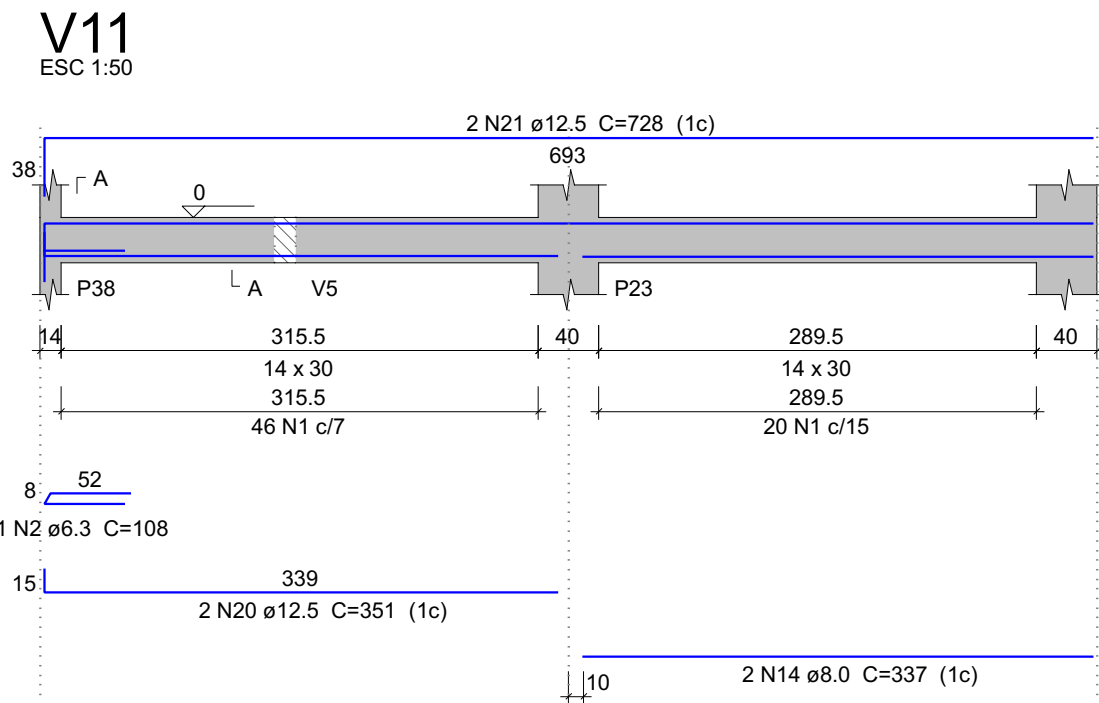
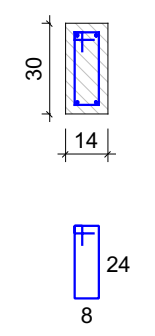
SEÇÃO A-A
ESC 1:25



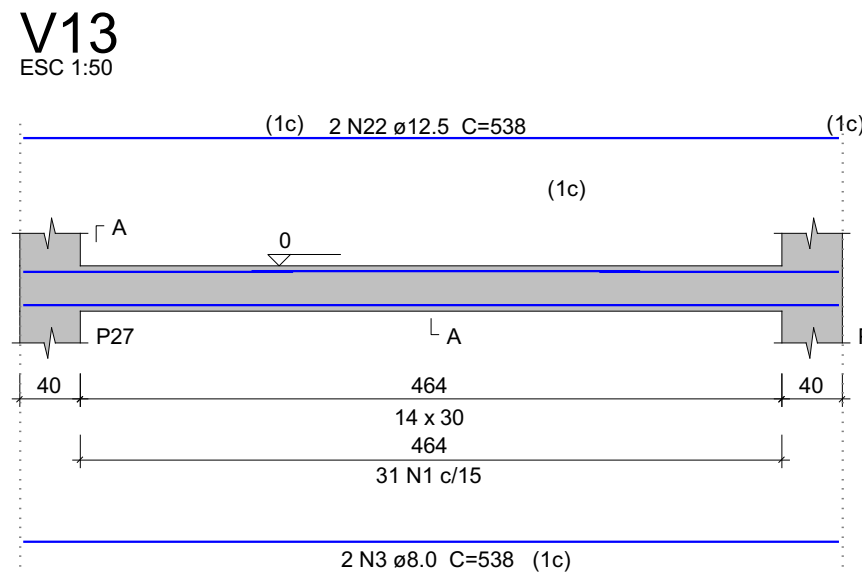
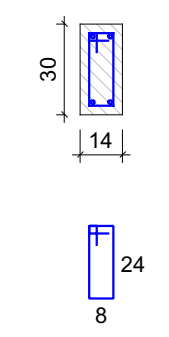
SEÇÃO A-A
ESC 1:25



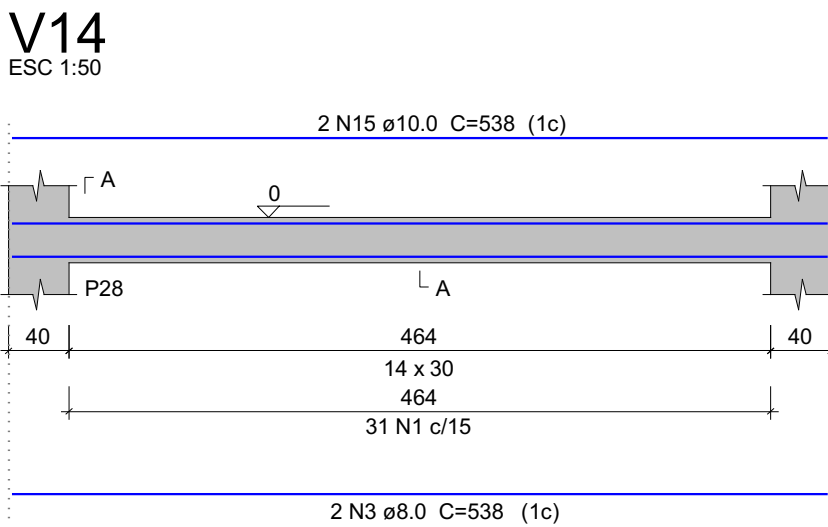
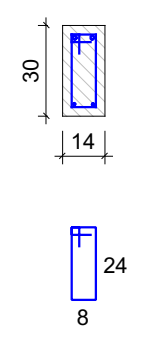
SEÇÃO A-A
ESC 1:25



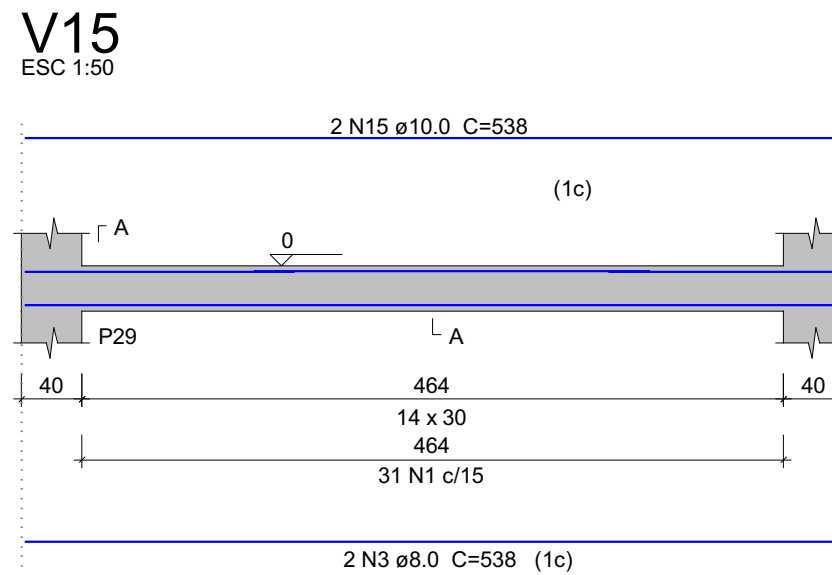
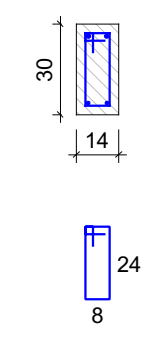
SEÇÃO A-A
ESC 1:25



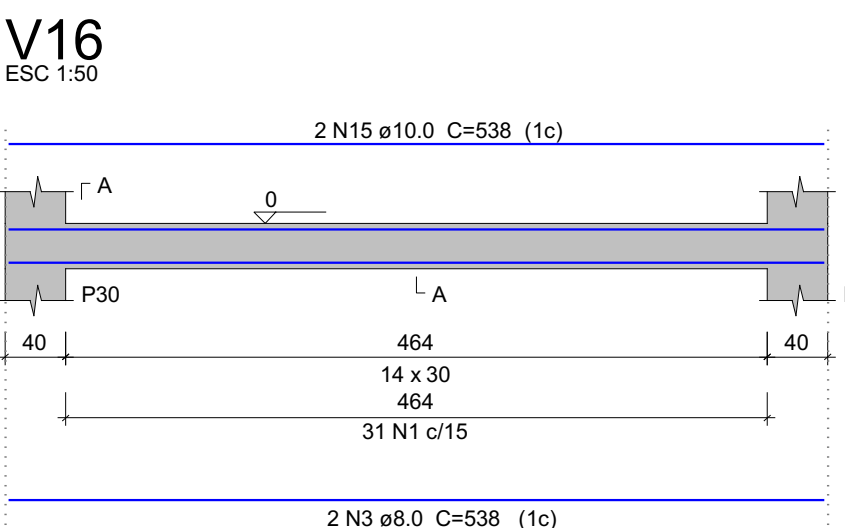
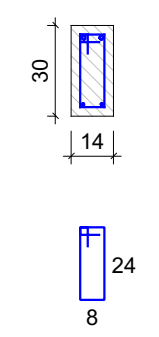
SEÇÃO A-A
ESC 1:25



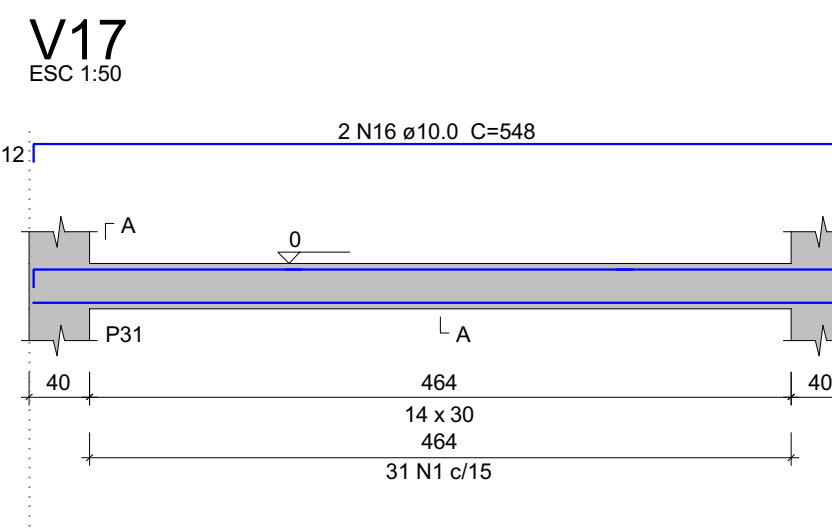
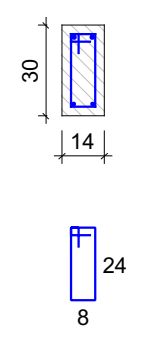
SEÇÃO A-A
ESC 1:25



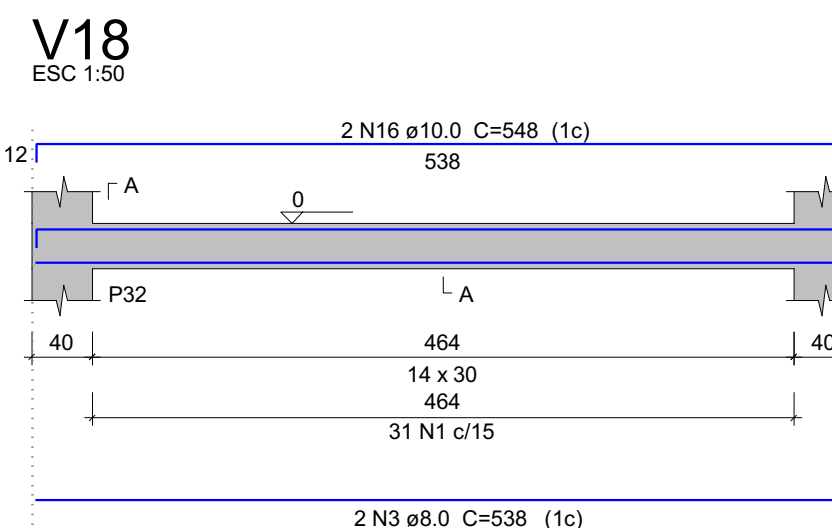
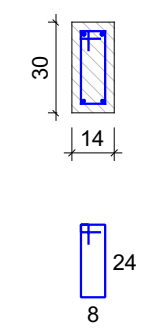
SEÇÃO A-A
ESC 1:25



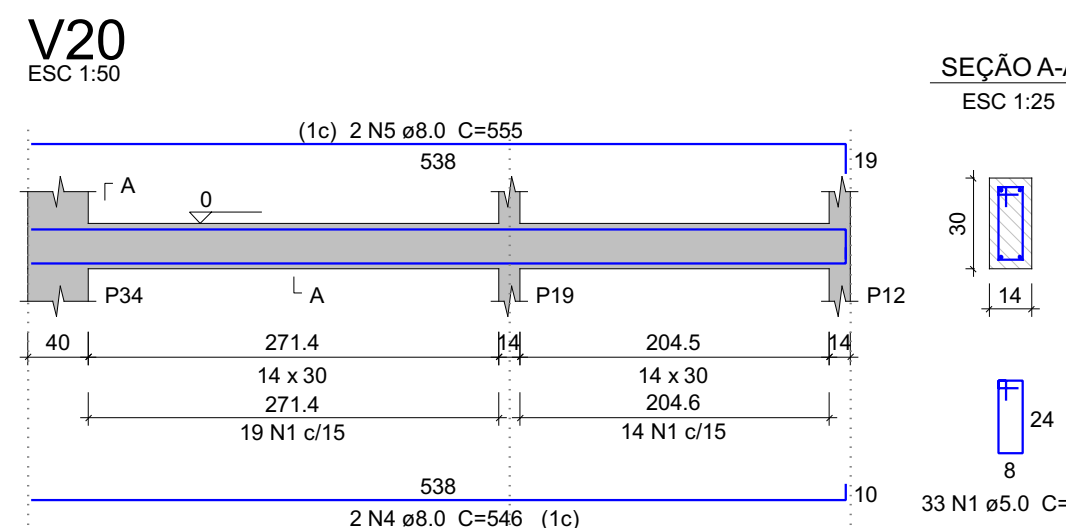
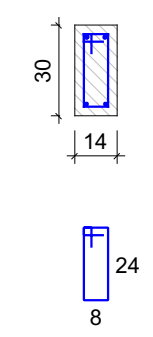
SEÇÃO A-A
ESC 1:25



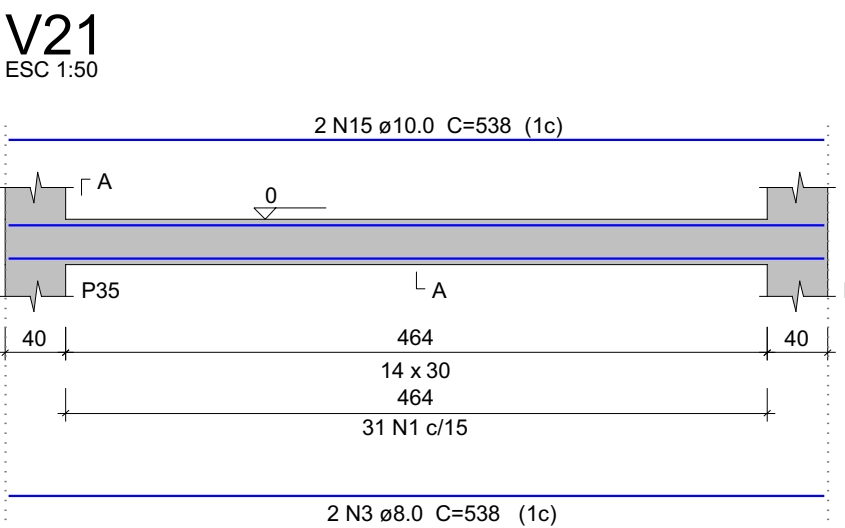
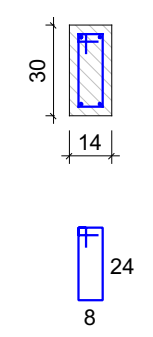
SEÇÃO A-A
ESC 1:25



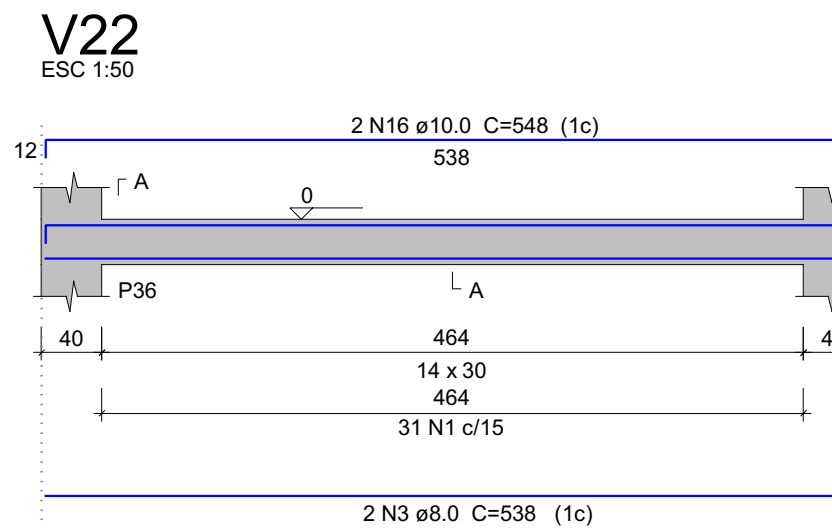
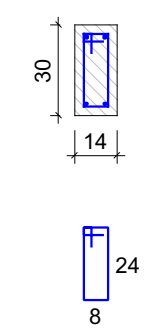
SEÇÃO A-A
ESC 1:25



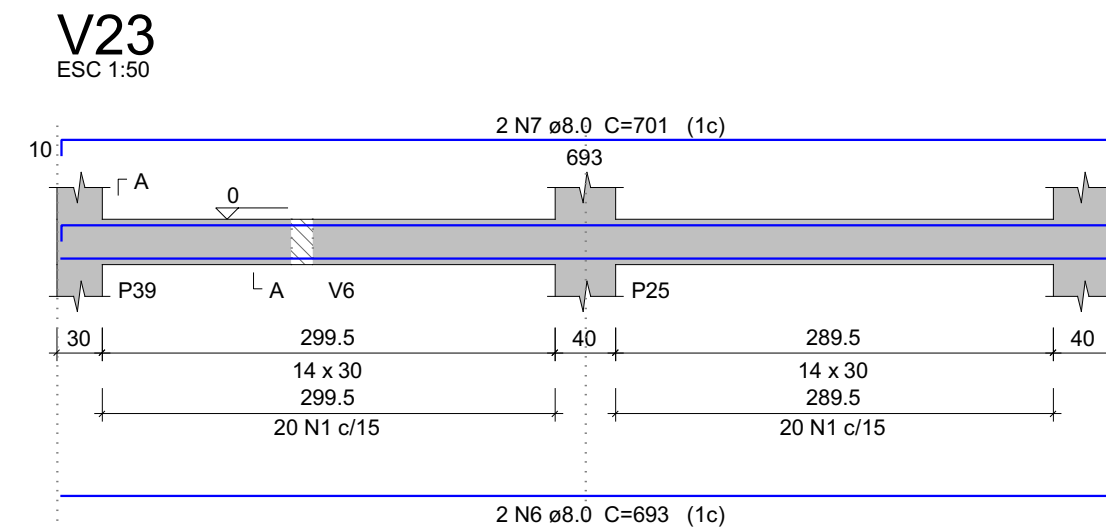
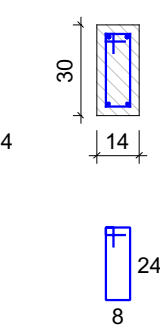
SEÇÃO A-A
ESC 1:25



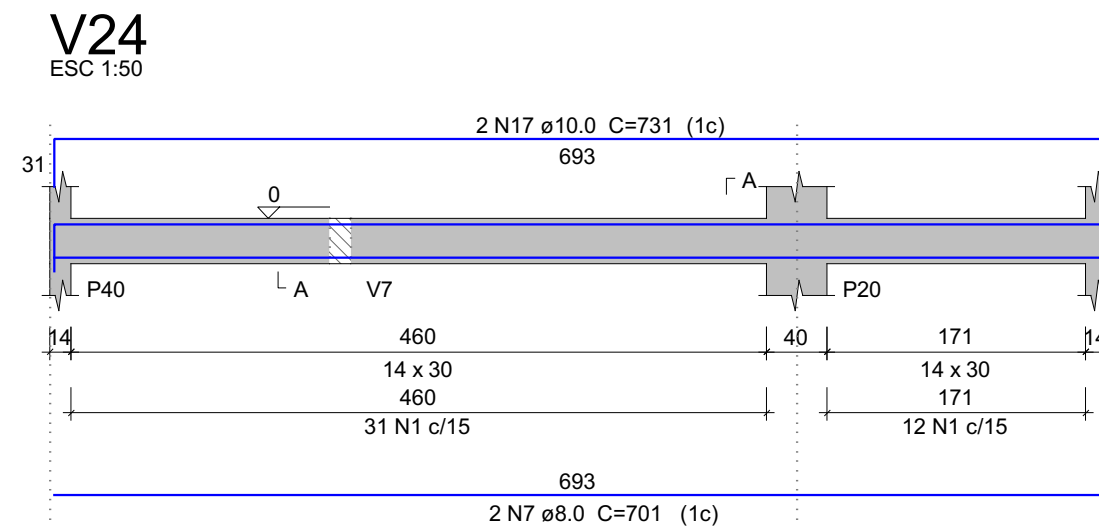
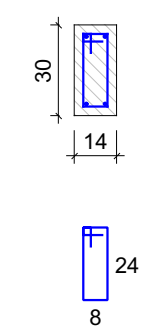
SEÇÃO A-A
ESC 1:25



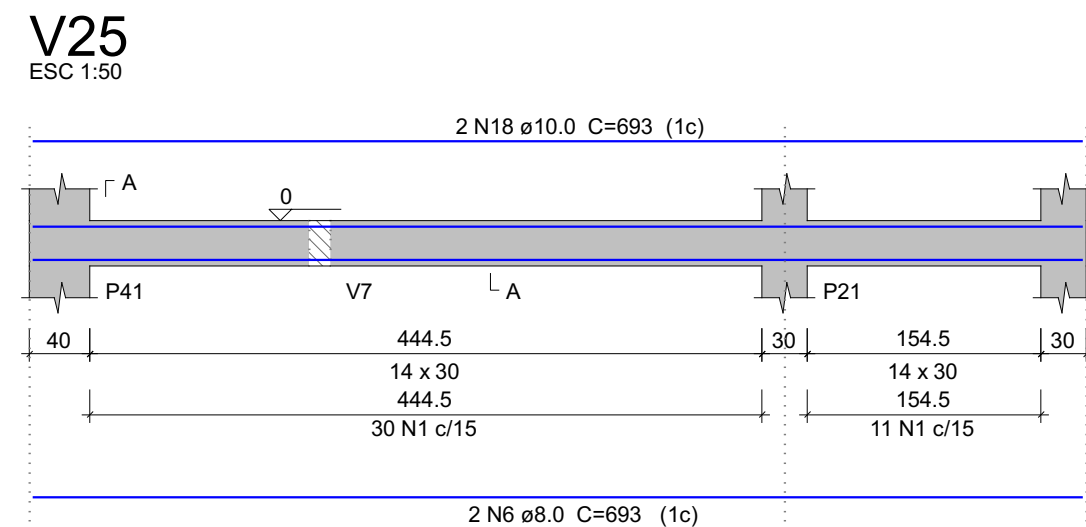
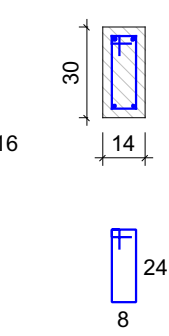
SEÇÃO A-A
ESC 1:25



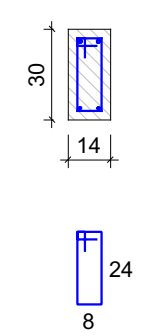
SEÇÃO A-A
ESC 1:25



SEÇÃO A-A
ESC 1:25



SEÇÃO A-A
ESC 1:25



Relação do aço

AÇO	N	DIAM (mm)	QUANT	C.UNIT (cm)	C.TOTAL (cm)
V8	V9	V10			
V11	V13	V14			
V15	V16	V17			
V18	V19	V20			
V21	V22	V23			
V24	V25				

Resumo do aço

AÇO	DIAM (mm)	C.TOTAL (m)	QUANT + 10 % (Barra)	PESO + 10 % (kg)
CA60	6.3	1.1	1	0.3
CA50	8.0	244.4	23	106.1
	10.0	115.7	11	78.4
	12.5	32.4	3	34.3
CA60	5.0	448.9	-	76.2
PESO TOTAL (kg)				
CA50	219			
CA60	76.2			

Volume de concreto (C-25) = 3.6 m³
Área de forma = 63.61 m²



PREFEITURA MUNICIPAL DE ARAPIRACA

Secretaria Municipal de Infraestrutura

Projeto Estrutural em Concreto Armado

Título/ Obra: Centro de Referência da Assistência Social - CRAS

Localização: Rua Pedro Tertuliano, Planalto, Arapiraca - AL

Proprietário/ Responsável:

Prefeitura Municipal de Arapiraca - CNPJ: 12198693/ 0001-58

Valmir Rodrigues de Albuquerque Filho
CREA/AL - 0215091841

Dados do Projeto:
ÁREA DO TERRENO: 2.024,00m²
ÁREA CONSTRUÍDA: 381,00 m²
ÁREA DE COBERTA: 423,00m²

Assunto: Vigas do pavimento Fundação

Atenção: Conferir as Medidas no Local

Desenho: SEMINFRA

Data:

Escala: Indicada

Prancha Nº:

9 / 16