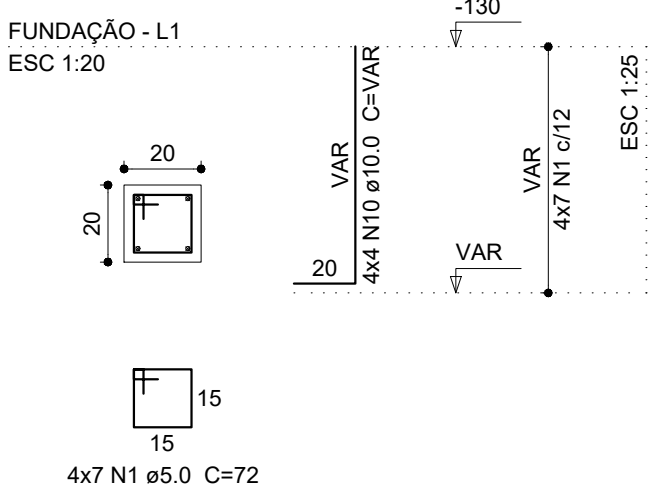
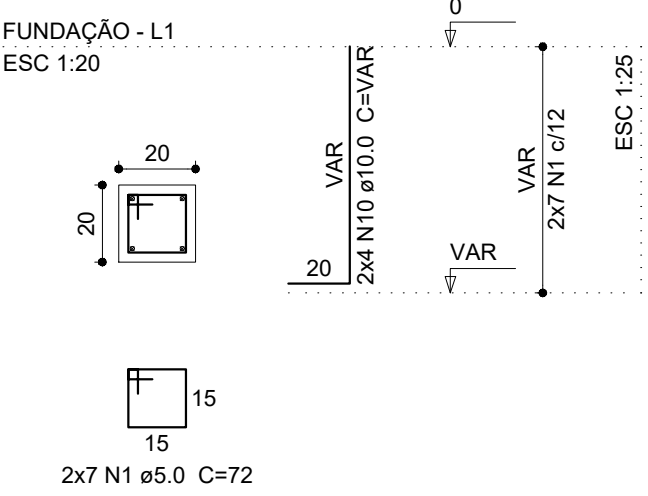


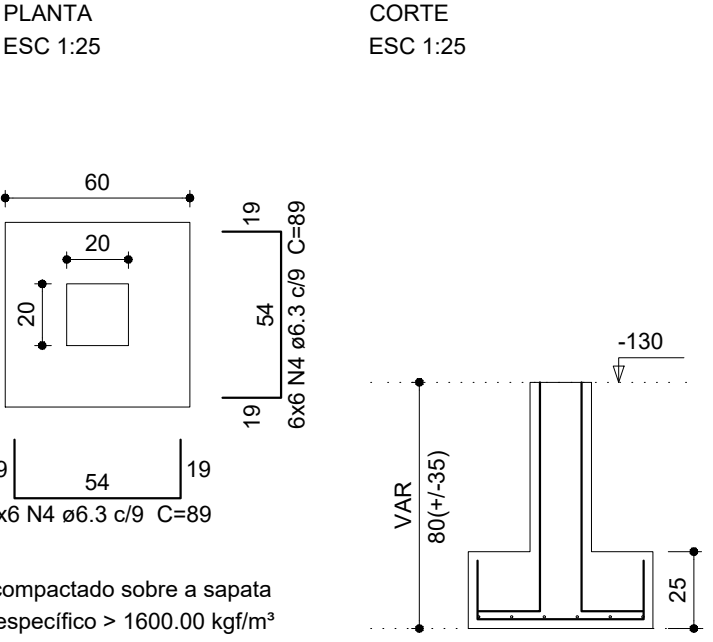
P10=P12=P14=P16



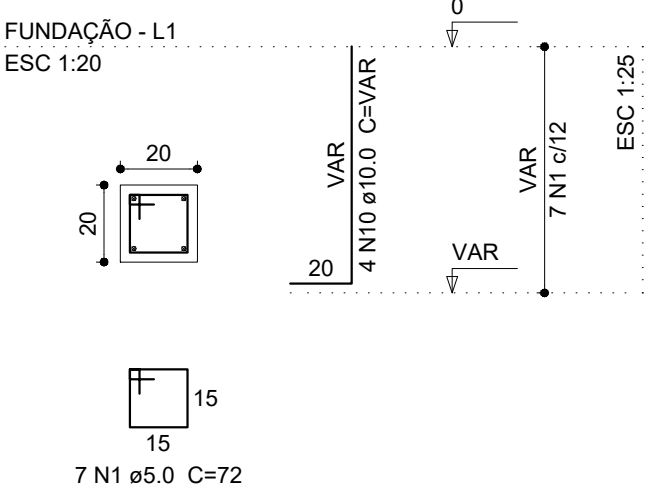
P9=P15



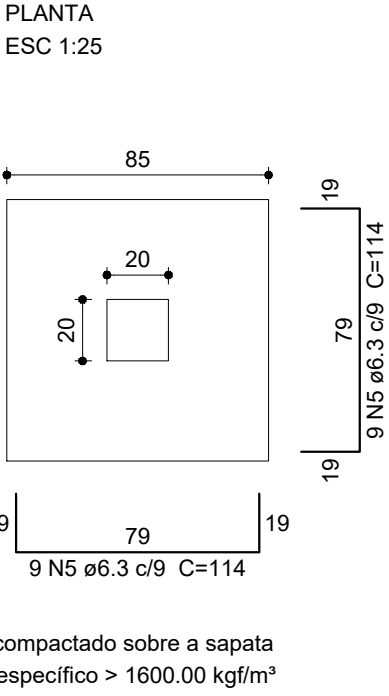
S9=S10=S12=S14=S15=S16



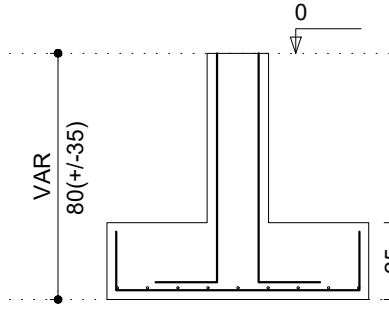
P11=P13



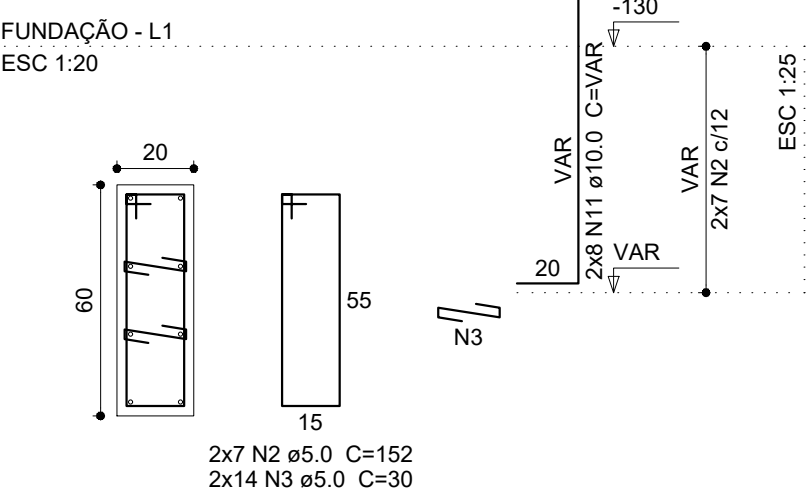
S11=S13



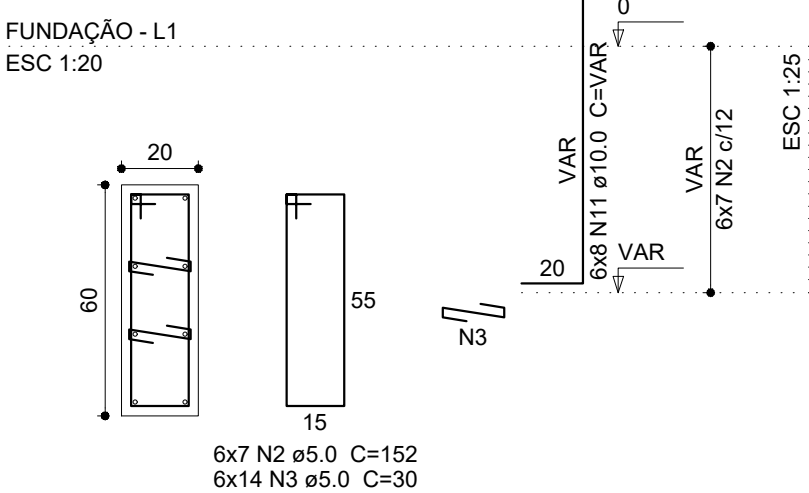
CORTE
ESC 1:25



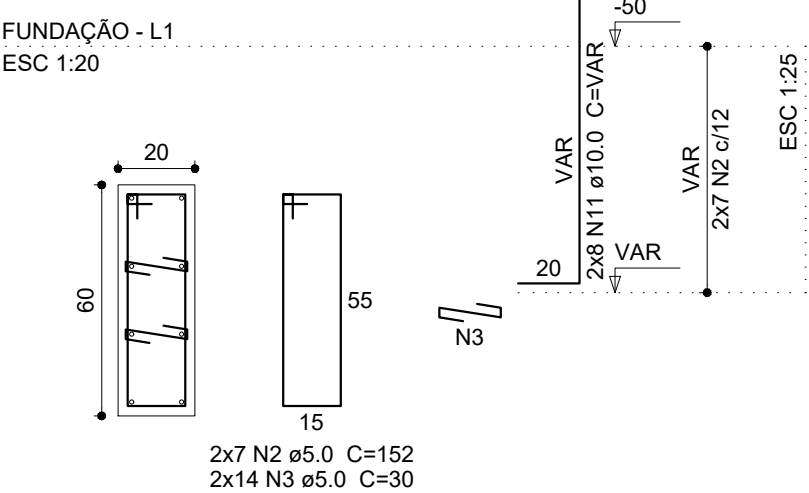
P8=P24



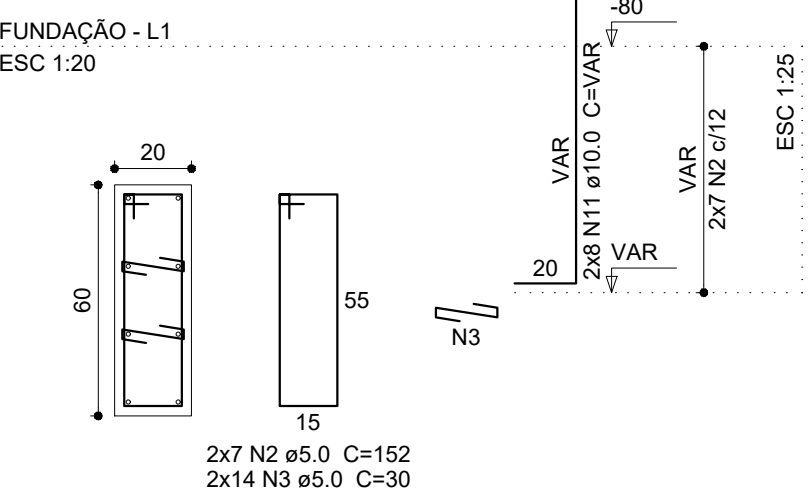
P4=P5=P17=P19=P20=P21



P6=P22

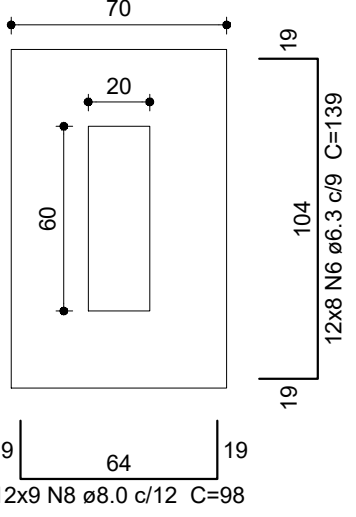


P7=P23

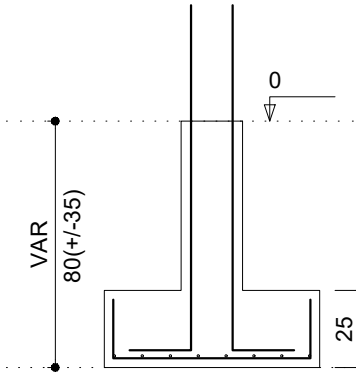


S4=S5=S6=S7=S8=S17=S19=S20=S21=S22=S23
=S24

PLANTA
ESC 1:25



Solo compactado sobre a sapata
peso especifico > 1600.00 kgf/m³



Relação do aço SAPATAS

AÇO	N	DIAM (mm)	QUANT (Barras)	UNIT (cm)	C.TOTAL (cm)
CA60	1	5.0	56	72	4032
	2	5.0	112	152	17024
	3	5.0	224	30	6720
CA50	4	6.3	72	89	6408
	5	6.3	36	114	4104
	6	6.3	96	139	13344
	7	6.3	32	144	4608
	8	8.0	108	98	10584
	9	8.0	40	103	4120
	10	10.0	32	VAR	VAR
	11	10.0	128	VAR	VAR

Resumo do aço

AÇO	DIAM (mm)	C.TOTAL (m)	PESO + 10 % (kg)
CA50	6.3	284.7	76.6
	8.0	147.1	63.8
	10.0	204.5	138.7
CA60	5.0	277.8	47.1
PESO TOTAL (kg)			
CA50		279.1	
CA60		47.1	

Volume de concreto (C-25) = 5.87 m³
Área de forma = 45.5 m²



PREFEITURA MUNICIPAL DE ARAPIRACA
Secretaria Municipal de Infraestrutura

PROJETO ESTRUTURAL

Título/ Obra:
QUADRA POLIESPORTIVA - Escola Prof. Mário Cesar Fontes

Localização:
BAIRRO PLANALTO, ARAPIRACA-AL

Proprietário/ Responsável:
Prefeitura Municipal de Arapiraca - CNPJ: 12.198.693/ 0001-58

Dados do Projeto:
CONTRATO Nº 1000925-80/2012
QUADRA POLIESPORTIVA NO PLANALTO
SAPATAS E PILARES

Assunto:
Atenção: Conferir as Medidas no Local
Revisão: 00
Prancha Nº: 03/06
Desenho: SEDUO
Data: OUT/2018
Escala: Indicada