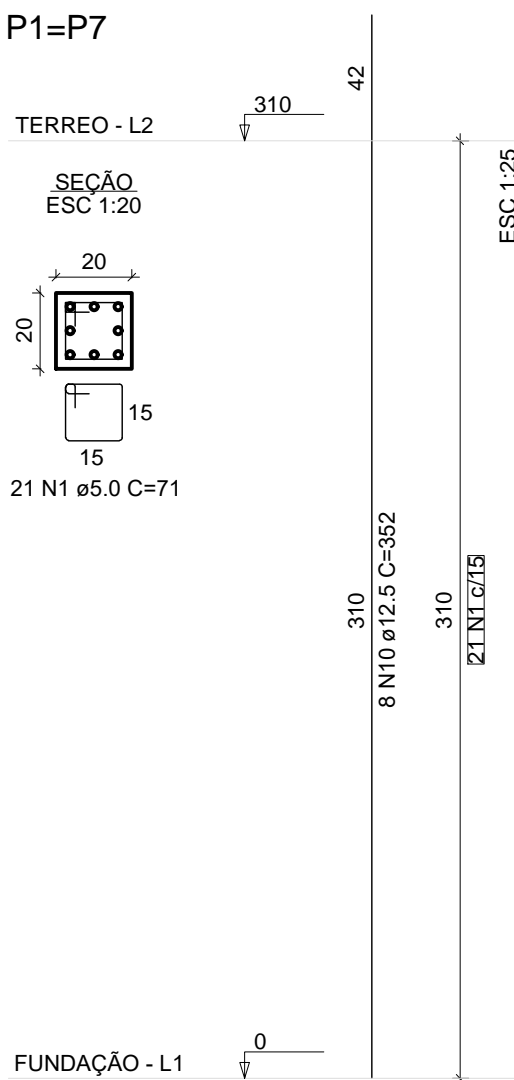
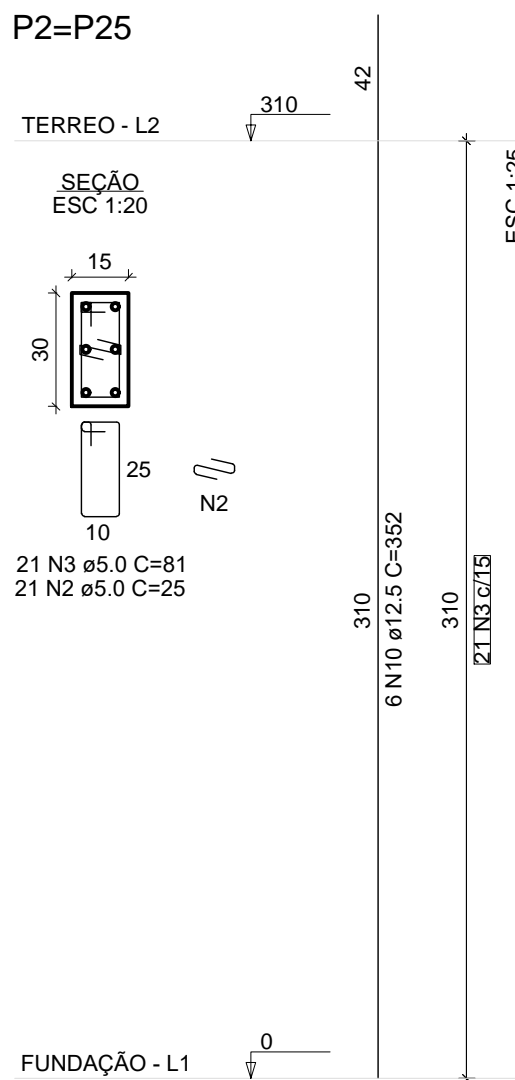


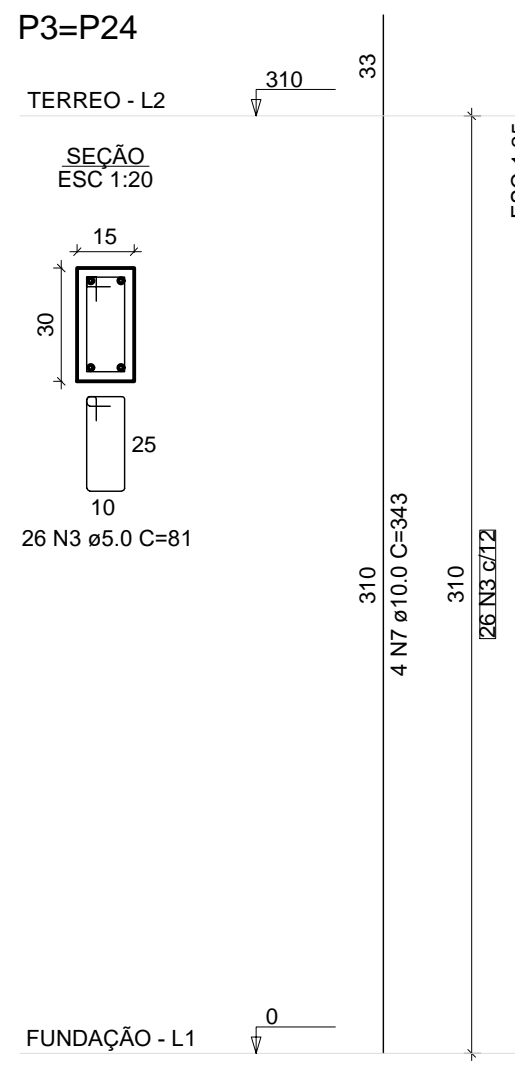
P1=P7



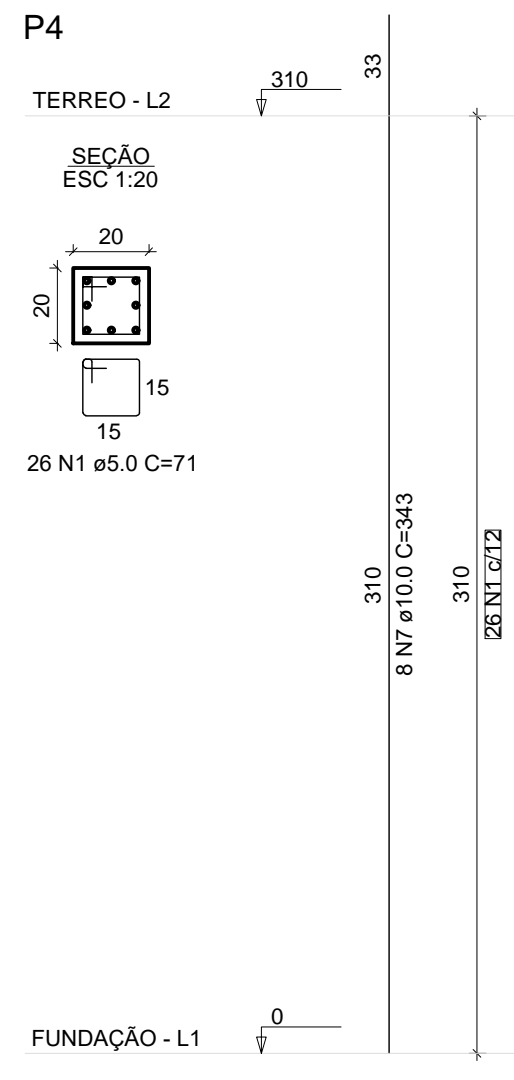
P2=P25



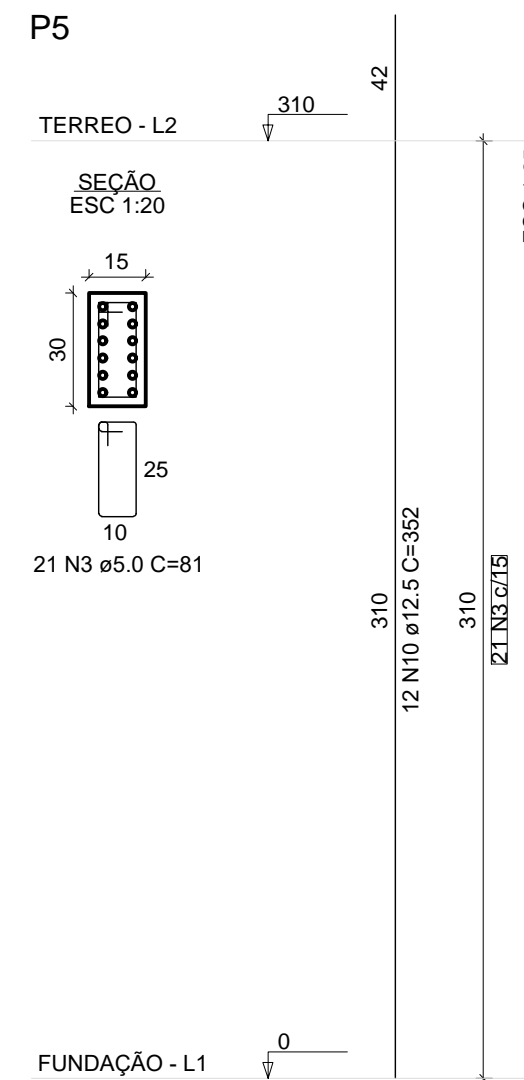
P3=P24



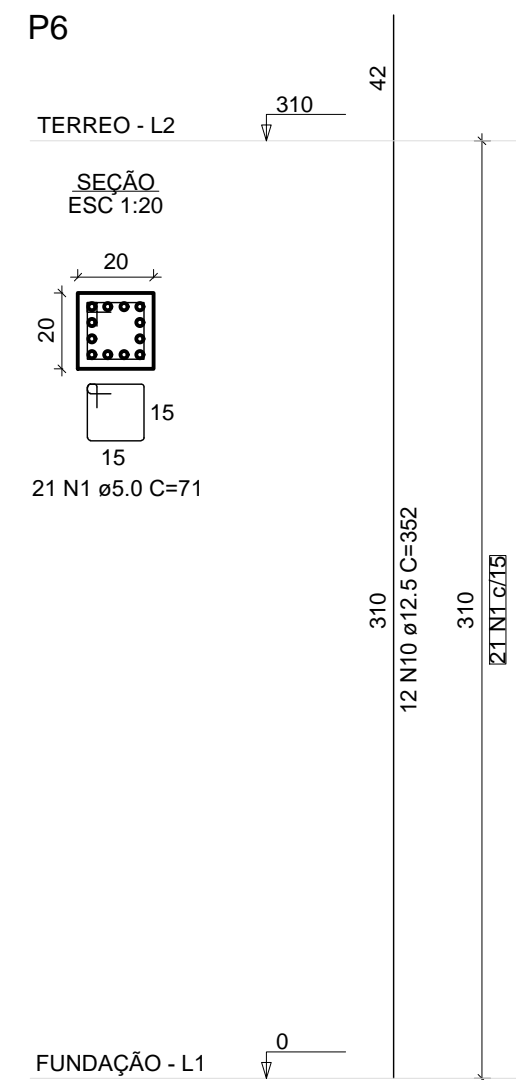
P4



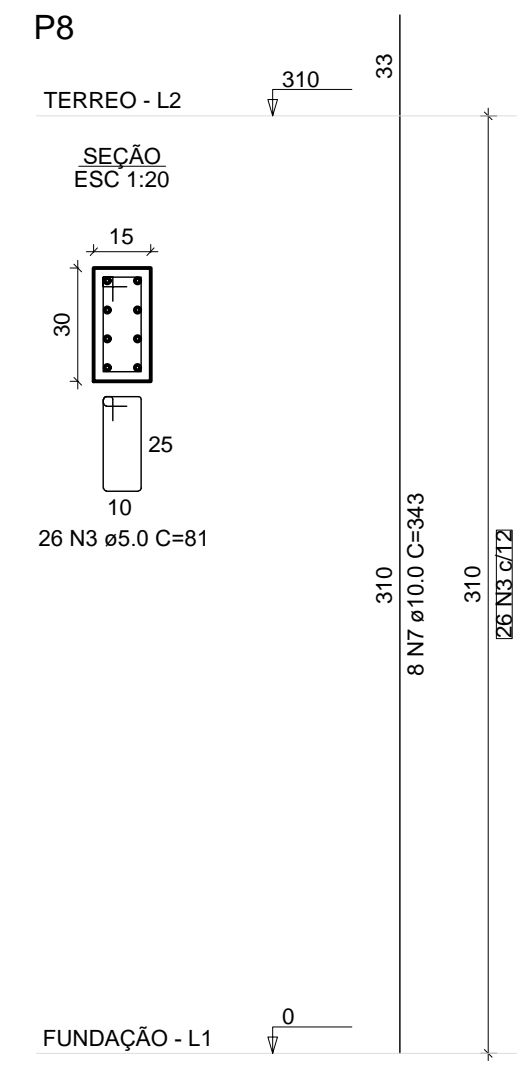
P5



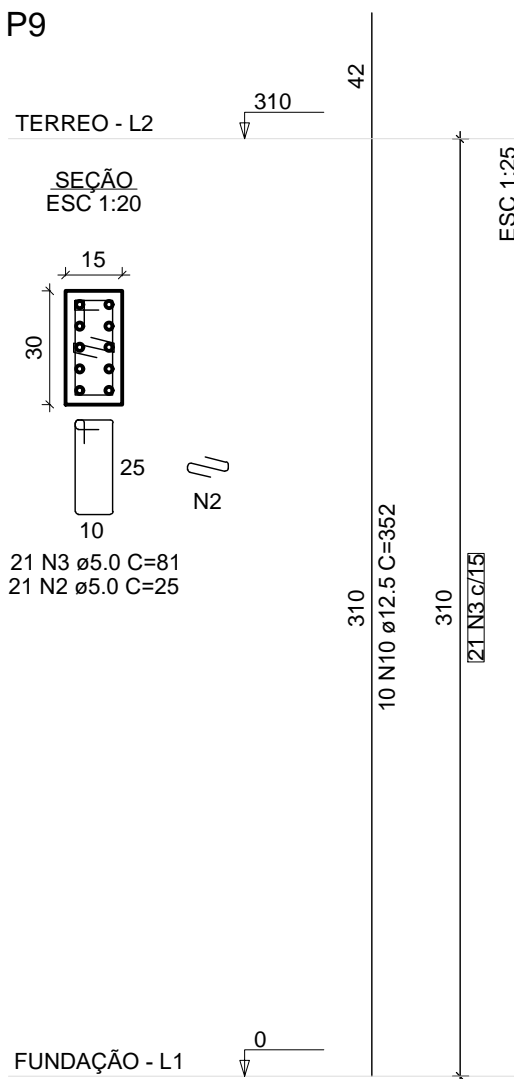
P6



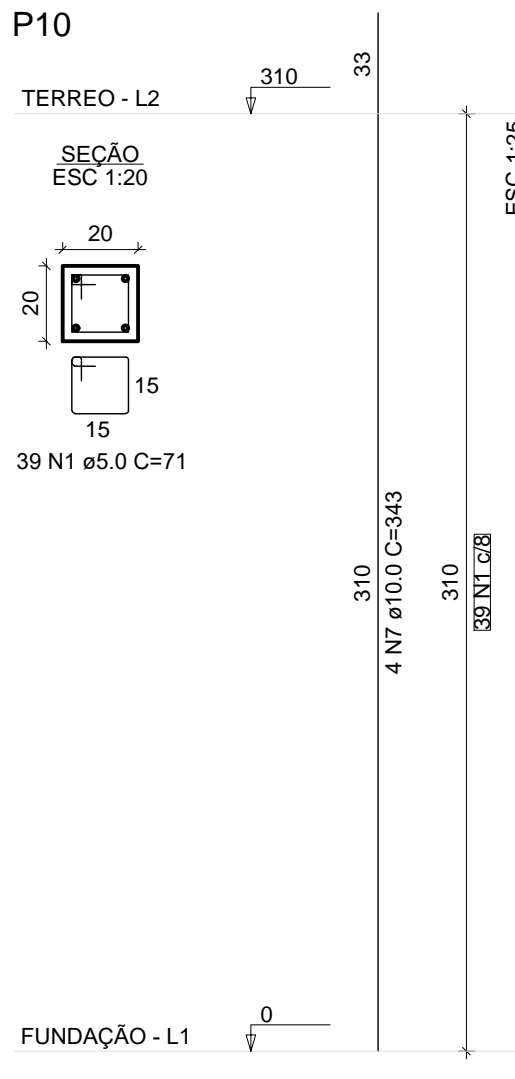
P8



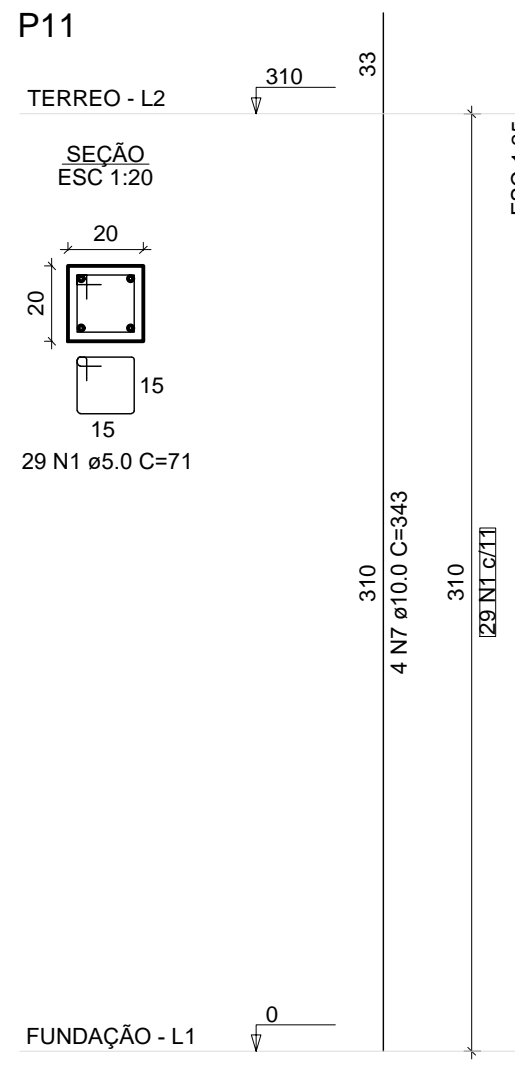
P9



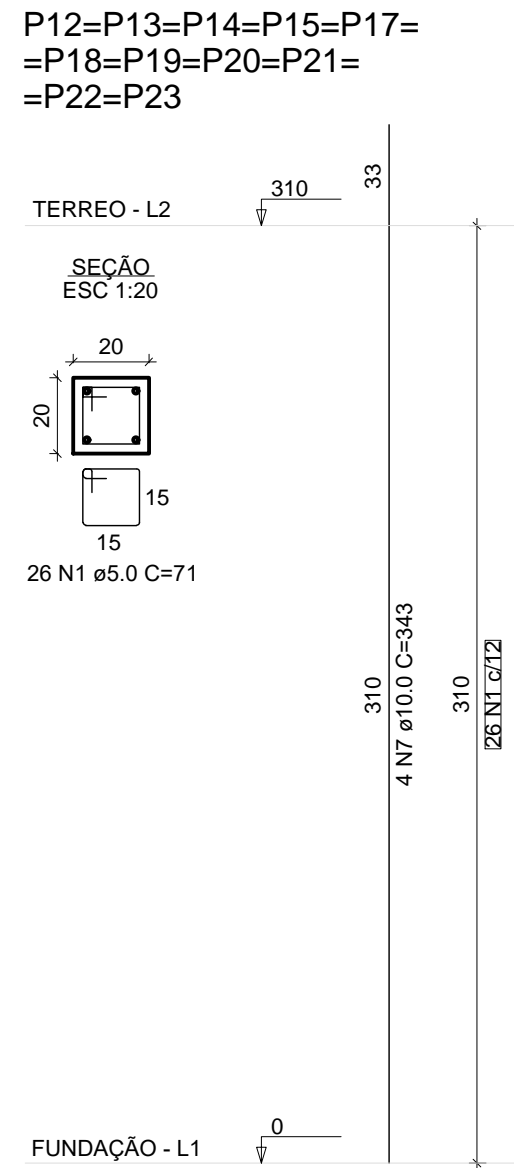
P10



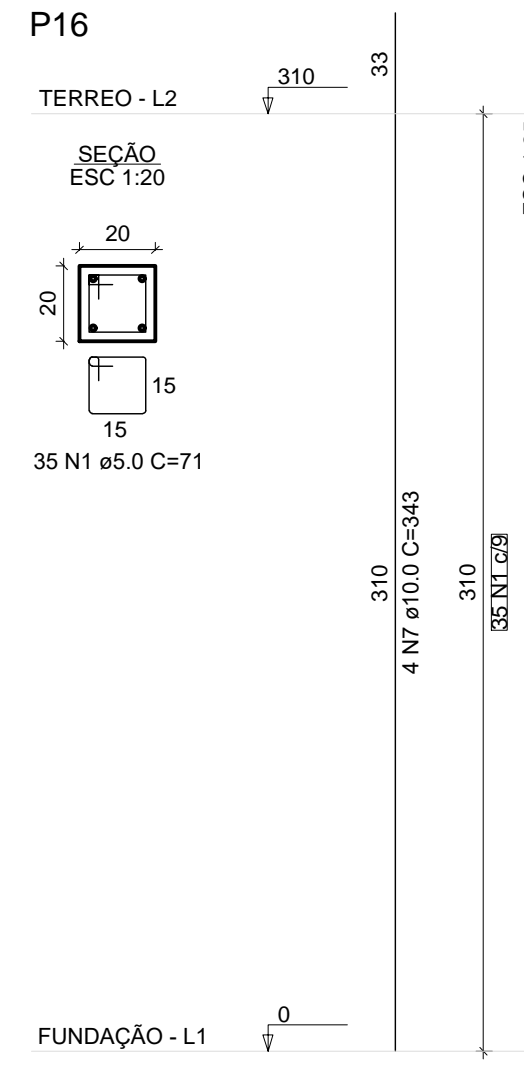
P11



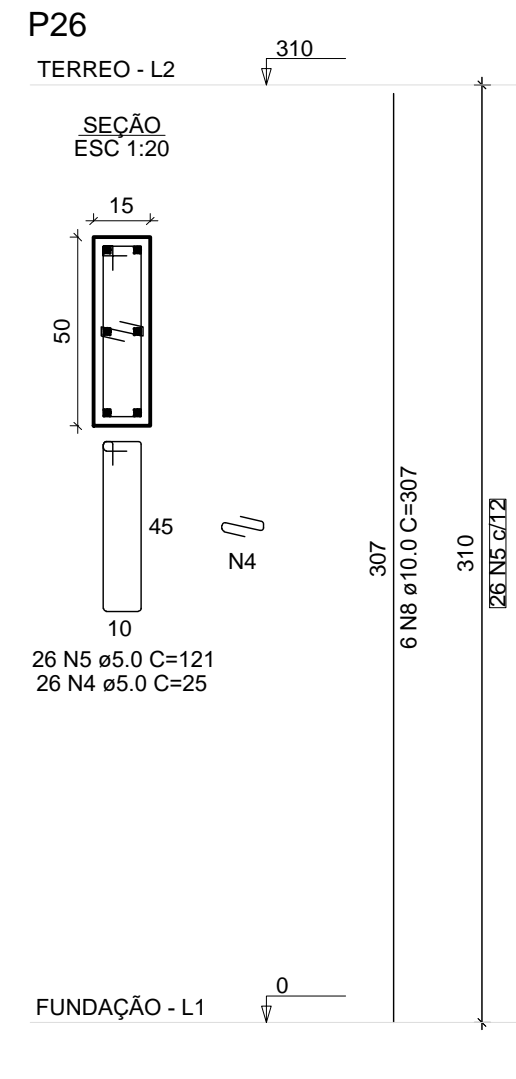
P12=P13=P14=P15=P17=  
=P18=P19=P20=P21=  
=P22=P23



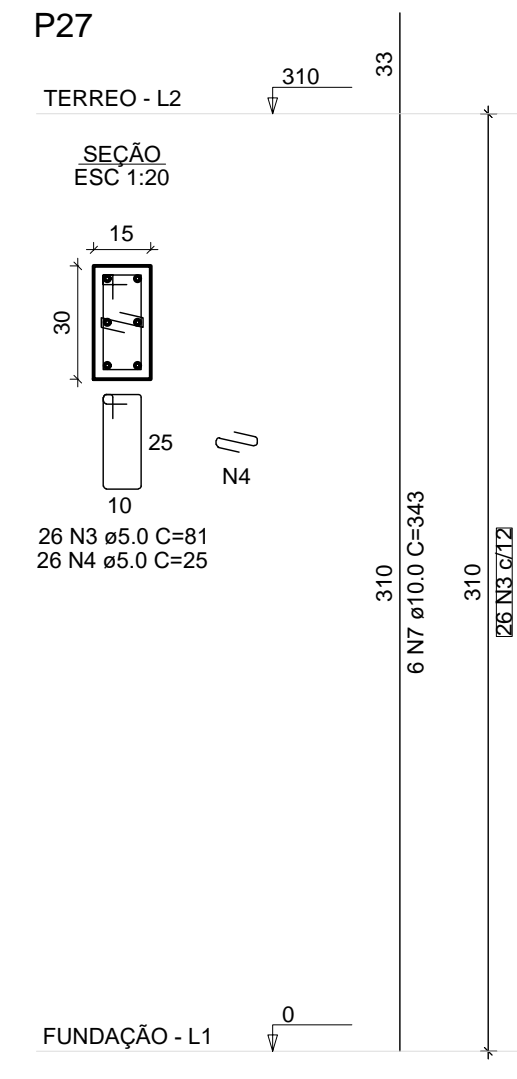
P16



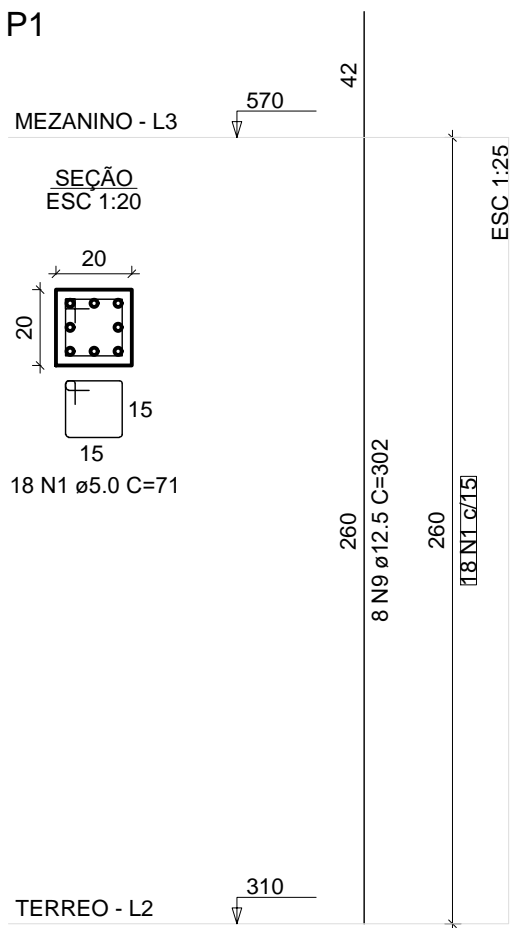
P26



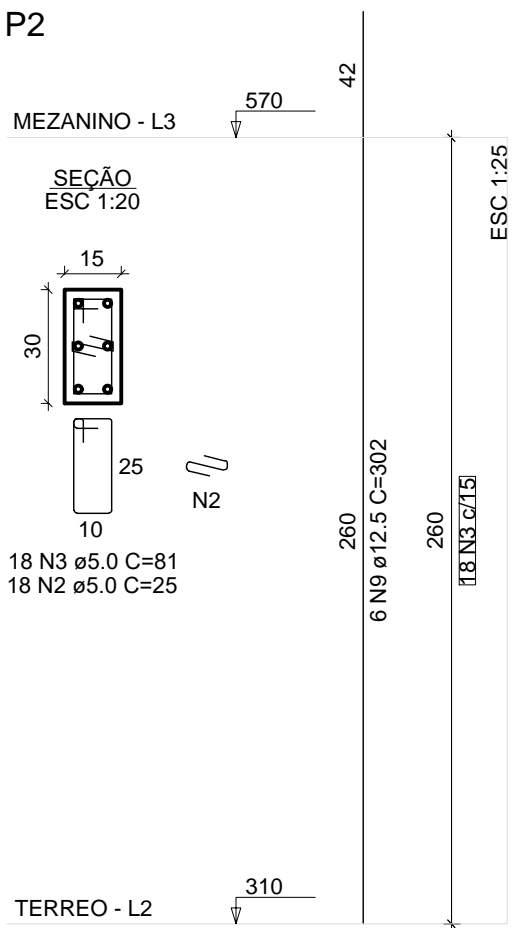
P27



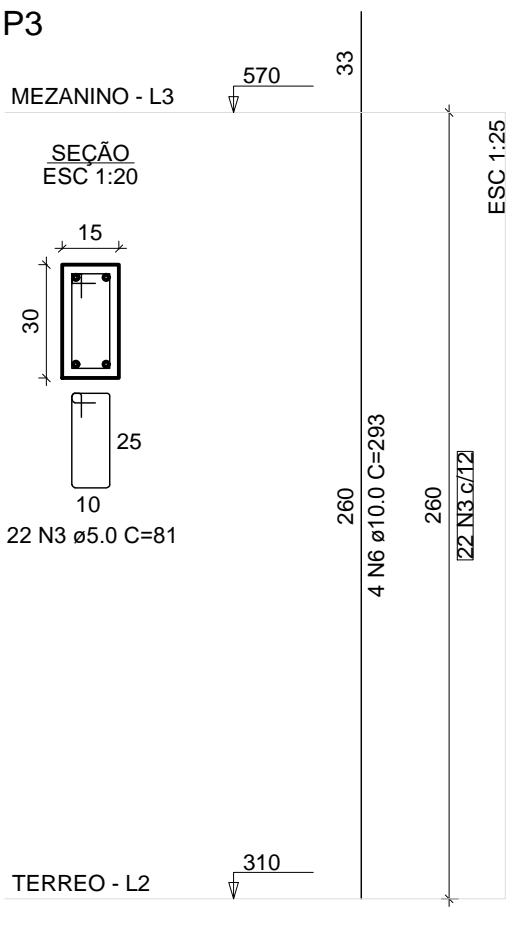
P1



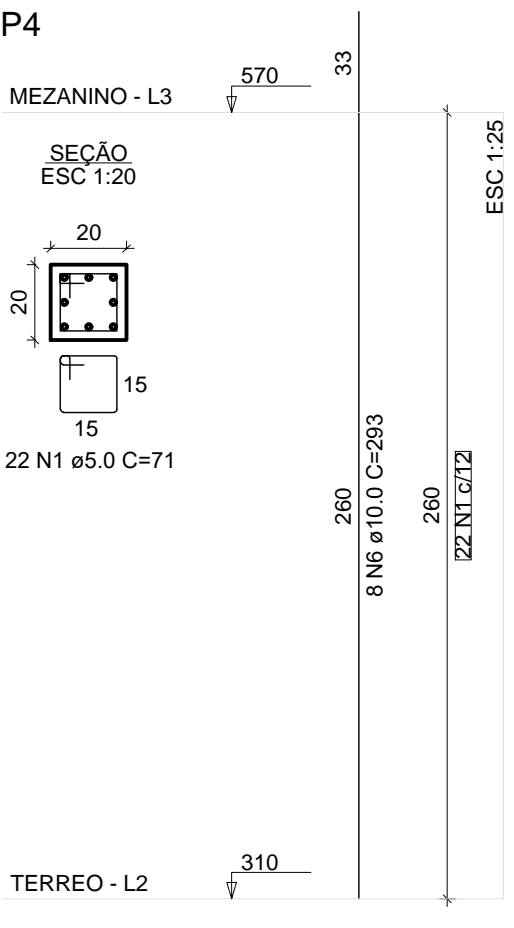
P2



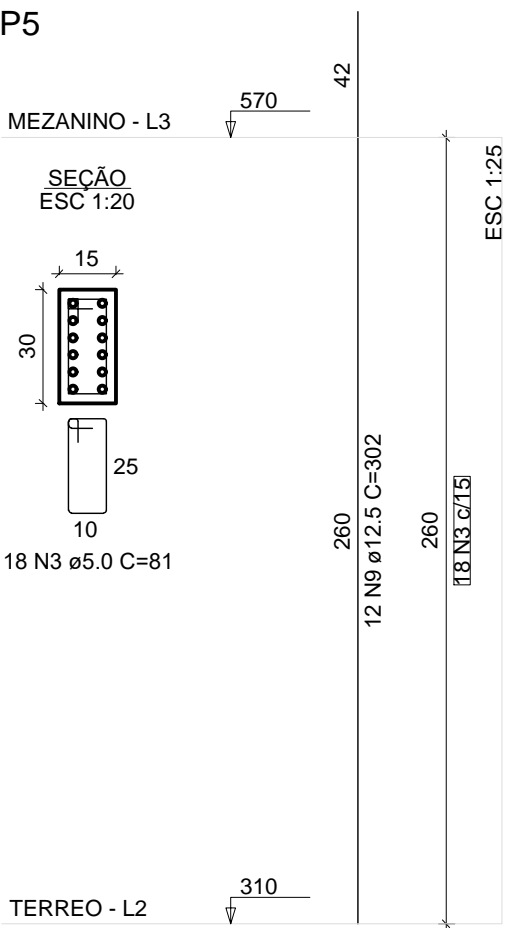
P3



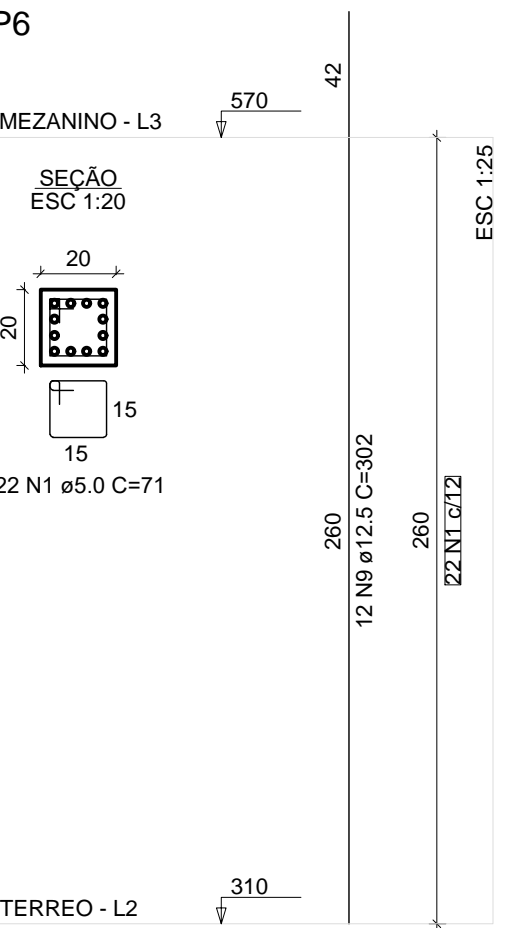
P4



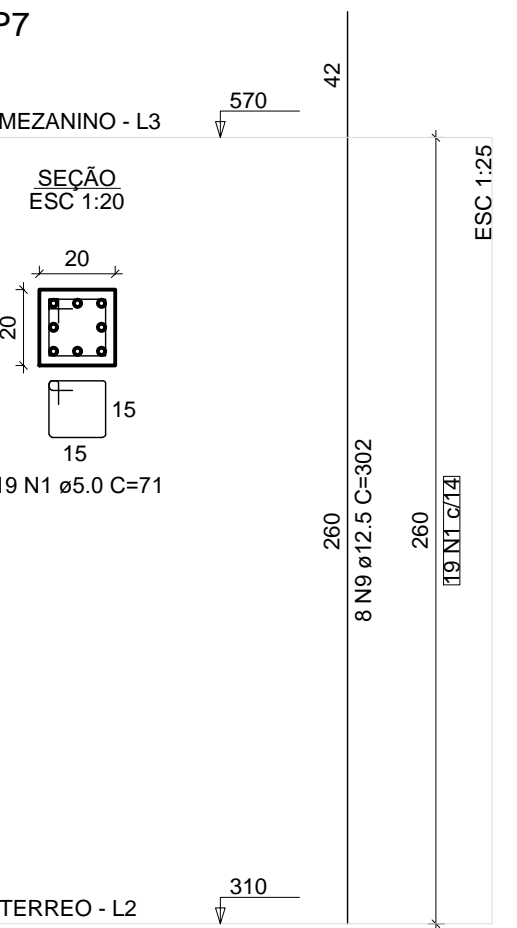
P5



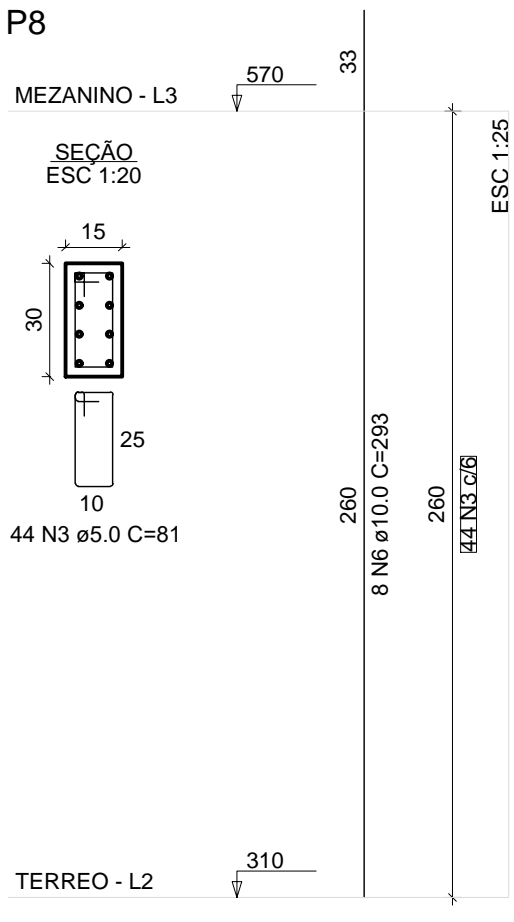
P6



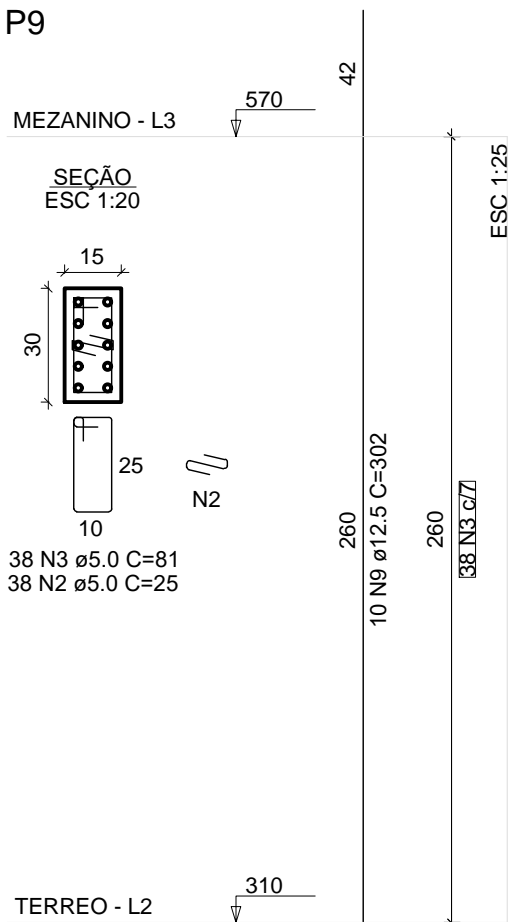
P7



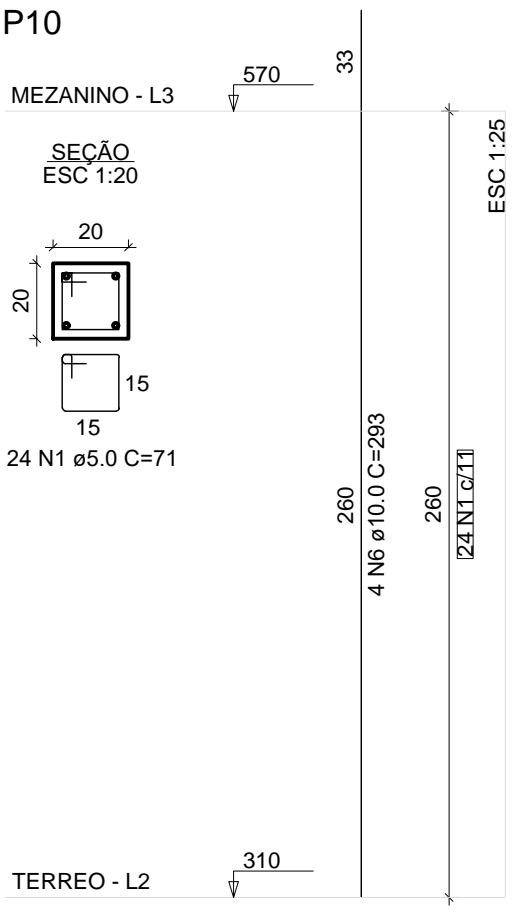
P8



P9



P10



RELAÇÃO DO AÇO  
PILARES

P1-L3	2xP1-L2	P2-L3
2xP2-L2	P3-L3	2xP3-L2
P4-L3	P4-L2	P5-L3
P5-L2	P6-L3	P6-L2
P7-L3	P8-L3	P8-L2
P9-L3	P9-L2	P10-L3
P10-L2	P11-L2	11xP12-L2
P16-L2	P26-L2	P27-L2

AÇO	N	DIAM (mm)	QUANT	C.UNIT (cm)	C.TOTAL (cm)
CA60	1	5.0	583	71	41393
	2	5.0	119	25	2975
	3	5.0	328	81	26568
	4	5.0	52	25	1300
CA50	5	5.0	26	121	3146
	6	10.0	24	293	7032
	7	10.0	86	343	29498
	8	10.0	6	307	1842
	9	12.5	56	302	16912
	10	12.5	62	352	21824

RESUMO DO AÇO

AÇO	DIAM (mm)	C.TOTAL (m)	PESO + 10% (kg)
CA50	10.0	383.7	260.2
CA60	12.5	387.4	410.5
	5.0	753.8	127.8
PESO TOTAL (kg)			
CA50	670.7		
CA60	127.8		

Volume de concreto (C-30) = 4.69 m³

Área de forma = 93.09 m²

Aprovação:

PREFEITURA MUNICIPAL DE ARAPIRACA  
DEPARTAMENTO DE PROJETOS  
APROVADO EM  
26/07/2021  
Volante de Solos e Saneamento  
Eng. Civil  
C.R.E.A. Nº 0085174-0



PREFEITURA MUNICIPAL DE ARAPIRACA  
Secretaria Municipal de Infraestrutura

## PROJETO ESTRUTURAL

Título/ Obra:

UNIDADE DE COMERCIALIZAÇÃO DA AGRICULTURA FAMILIAR E ECONOMICA SOLIDÁRIA

Localização:

Rua Teodorico Costa, Centro Arapiraca - AL

Proprietário/ Responsável:

Prefeitura Municipal de Arapiraca / INEP: 12198693/ 0001-58  
Marcus Vinicius Nunes Silva  
Engenheiro Civil  
MARCUS VINICIUS NUNES SILVA CREA 0216086124

Dados do Projeto:

CT: 1068387-68/2019

Assunto:

DETALHE DOS PILARES

Atenção: Conferir as Medidas no Local

Prancha Nº:

Desenho:

Gráfico - SEMINFRA

Data:

MAR/ 2020

Escala:

Indicada

05/10